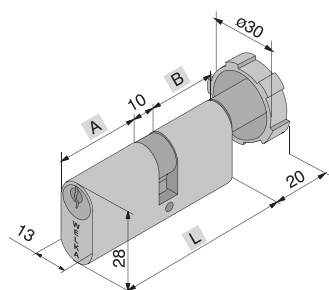
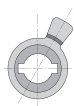


Cilindro ovale in ottone mm 13x28, leva Welka centrale con pomolo in zama ottonato.



Oval brass cylinder mm 13x28, central Welka lever with brassed zamak knob.



Distanza fissa tra **A** e **B**: 10 mm
Fixed distance between **A** and **B**: 10 mm



Leva DIN 30°

ARTICOLO Article	FINITURA Finish	A	B	L			Quantità min. da ordinare
722.22.22.0	Ottone - Brass	22	22	54	4	1	1
722.22.28.0		22	28	60	4	1	1

IN DOTAZIONE
N° 3 Chiavi

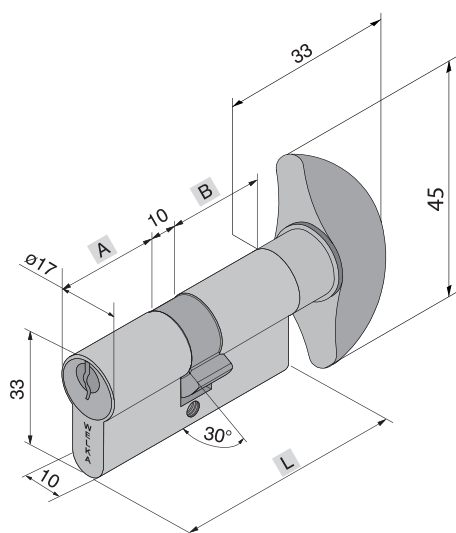
Art.
502



Included
N° 3 Keys

ARTICOLO Article	IMPIANTI SPECIALI - DESCRIZIONE Special execution - description	Sigla Abbreviation
995.00.00.0	Cifratura a chiave uguale a ns. scelta - Key alike	KA
996.00.00.0	Cifratura a chiave uguale al campione - Key alike to the sample	KAS

Cilindro sagomato in ottone, leva DIN 30°, con pomolo piatto.

Brass profile cylinder, Din lever 30° with flat knob.



ARTICOLO Article	FINITURA Finish	A	B	L			Quantità min. da ordinare
731.22.22.0	Ottone - Brass	22	22	54	4	1	1
731.22.28.0		22	28	60	4	1	1
731.26.26.0		26	26	62	5	1	1
731.28.22.0		28	22	60	5	1	1
731.28.28.0		28	28	66	5	1	1
731.30.30.0		30	30	70	5	1	1
731.35.25.0		35	25	70	5	1	1
731.35.35.0		35	35	80	5	1	1

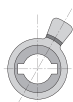
IN DOTAZIONE
N° 3 Chiavi

Art.
500-501

Included
N° 3 Keys

ARTICOLO Article	FINITURE DISPONIBILI Available Finishes	Quantità min. da ordinare
731.--.--.1	Ottone nichelato - Nickel brass	1
731.--.--.3	Ottone cromato lucido - Polish chrome brass	500
731.--.--.5	Ottone cromato satinato - Satin chrome brass	500
731.--.--.6	Ottone nichel perla - Pearl nickel brass	50
731.--.--.10	Bronzo antico - Antique bronze	500

Distanza fissa tra **A** e **B**: 10 mm
Fixed distance between **A** and **B**: 10 mm



Leva DIN 30°

ARTICOLO Article	IMPIANTI SPECIALI - DESCRIZIONE Special execution - description	Sigla Abbreviation
995.00.00.0	Cifratura a chiave uguale a ns. scelta - Key alike	KA
996.00.00.0	Cifratura a chiave uguale al campione - Key alike to the sample	KAS