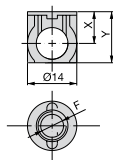


# Sistemi di assemblaggio

## Mounting systems

### Boccola

Housings

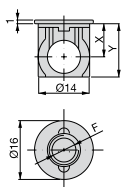


X	Y	F		Cod.	
8	14	M8	16	<b>80106</b> - 05	1.000
9	14,5	M8	18	<b>80351</b> 01 05	1.000
10	15,5	M8	20	<b>80350</b> - 05	1.000

Tirante Bolt A	Foratura Drilling A <sub>1</sub>
18,5	20
20	21,5
28,5	30
30	31,5

### Boccola con collare

Housing with cover rim

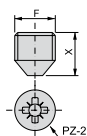


X	Y	F		Cod.	
8	14	M8	16	<b>80102</b> 05	1.000
9	14,5	M8	18	<b>80349</b> 05	1.000
9	14,5	M8	18	<b>80170</b> 05	1.000
12,5	18	M8	25	<b>80087</b> 05	1.000

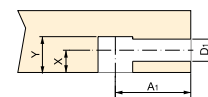
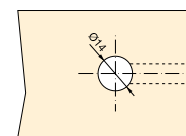
Tirante Bolt Ø	Foratura Drilling D <sub>1</sub>
7	Ø7,5
8	Ø8,5

### Vite a cono

Conical screw

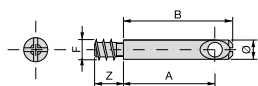


X	F		Cod.	
8,5	M8	14-16-18	<b>81461</b> 05	1.000
10	M8	20	<b>81118</b> 05	1.000
10	M8	22	<b>81119</b> 05	1.000
12	M8	25	<b>81121</b> 05	1.000



### Tirante

Bolt



Ø	A	B	Z	F	Cod.	
7	18,5	26	9	M6	<b>80130</b> 05	1.000
7	20	27	9	M6	<b>80129</b> 05	1.000
7	30	36	9	M6	<b>80127</b> 05	1.000

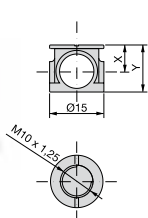
Acciaio / Steel

Acciaio / Steel

[www.emuca.it](http://www.emuca.it)

### Boccola

Housings

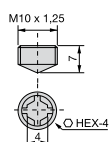


X	Y	Cod.	
18	9	<b>82052</b> 05	1.000

Zama / Zamak

### Vite a cono

Conical screw

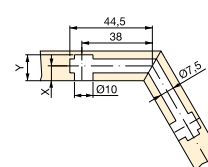
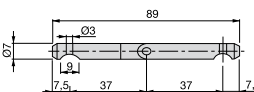


X	Cod.	
18	<b>81341</b> 05	1.000

Zama / Zamak

### Tirante snodato

Double articulated bolt



Cod.	
<b>50122</b> 05	500

Acciaio / Steel

