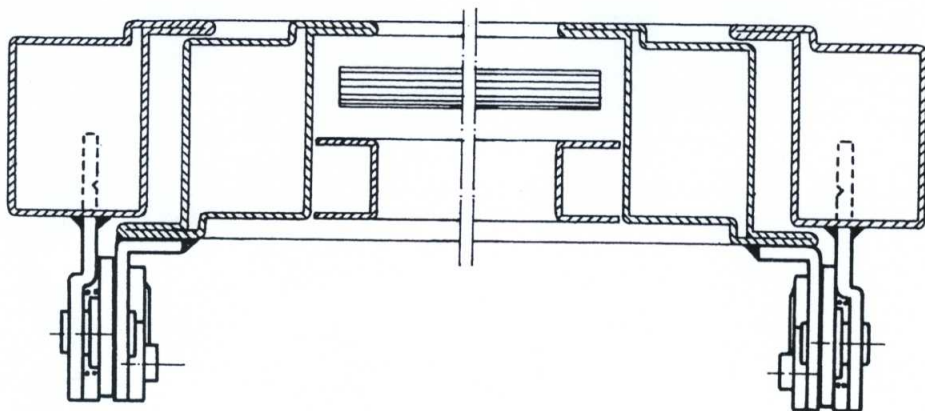


Chiusura BERTO

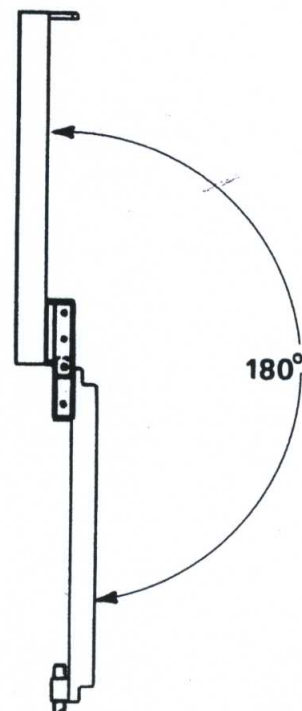
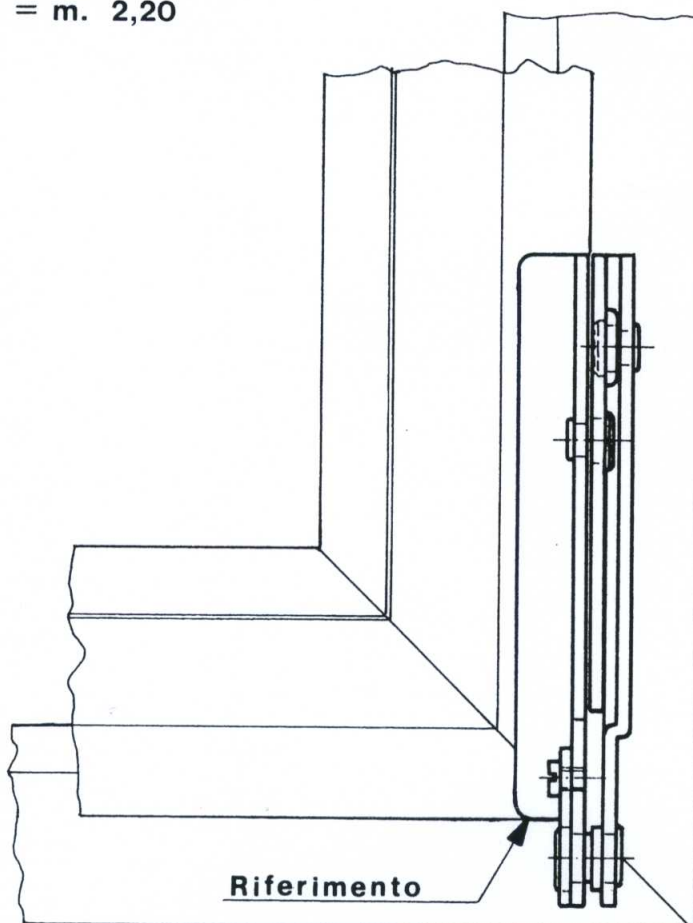
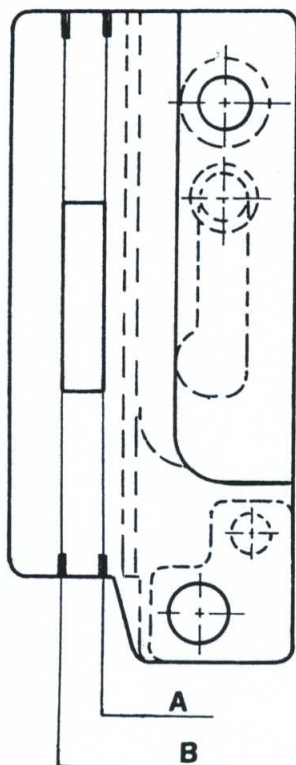
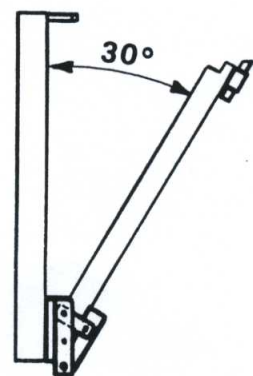
447

per vasistas in ferro
apertura a 30° e a 180°



CAMPO DI APPLICAZIONE

Superficie MAX sportello = m². 1,00
Altezza MAX » = m. 0,80
Peso MAX » = Kg. 50
Larghezza MAX » = m. 2,20



89010033

Rifilare la zanca in posizione A per
profili con battuta mm. 3 ed in
posizione B per profili con battuta mm. 12.



LUIGI SAVIO