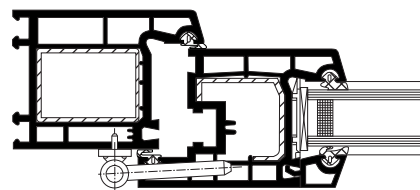


For PVC-U doors and windows

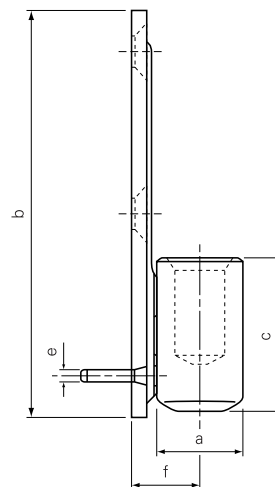
Load per hinge 12 kg



Article	Material	Finish	Salt spray test hour	Packaging
836575	Steel	Beige RAL 1015	1000	100
836573	Steel	Brown RAL 8017	1000	100
839436	Steel	Brown RAL 8022	1000	100
716266	Steel	Black RAL 9005	1000	100
1272318	Steel	White	1000	100
839431	Steel	White RAL 9010	1000	100



a mm	b mm	c mm	e mm	f mm
13,0	60,0	22,5	2,0	10,5


associated articles


169-13-M04

p. 9.1 3