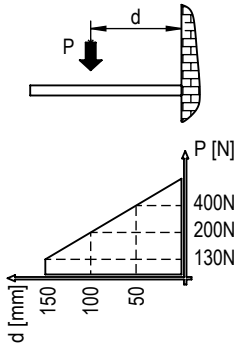
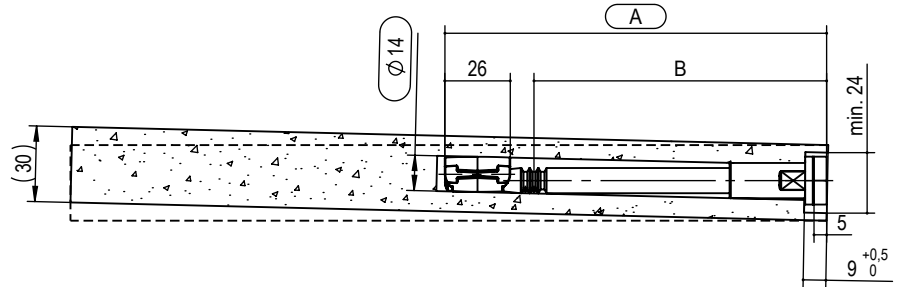
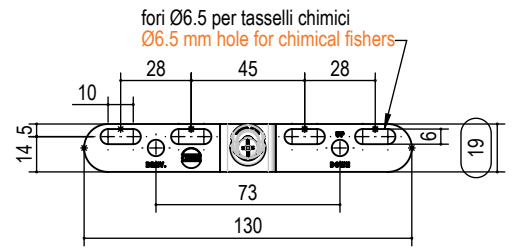
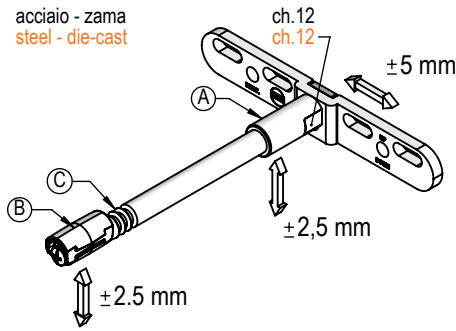




Reggimensola a scomparsa tipo MN112

Invisible shelf support type MN112

acciaio - zama
steel - die-cast



Cod. C.A188.00
TASSELLI PER
CARTONGESSO
DRYWALL ANCHORS

| tipo type | misura measure | A | B | finitura finishing | kg/ box | pcs/ box | box |
|--------------|-------------------|-----|-----|------------------------------|------------|-------------|-----|
| MN112. | 125. | 125 | 75 | 02 zincato bianco white zinc | 15,2 | 100 | B |
| | 150. | 150 | 105 | | 17,3 | | |
| | 175. | 175 | 130 | | 18,8 | | |

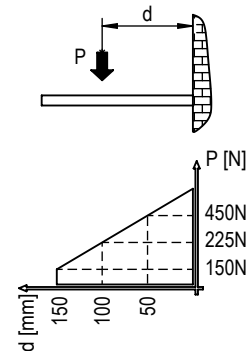
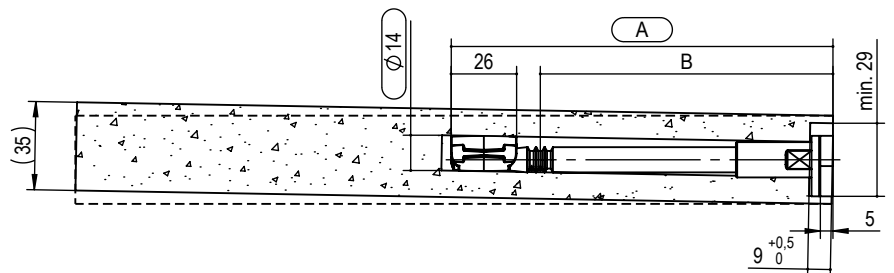
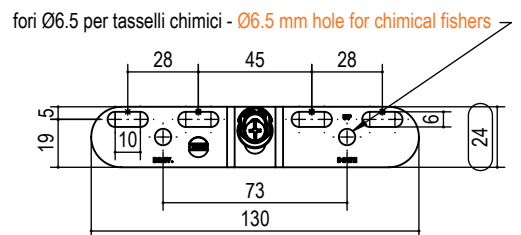
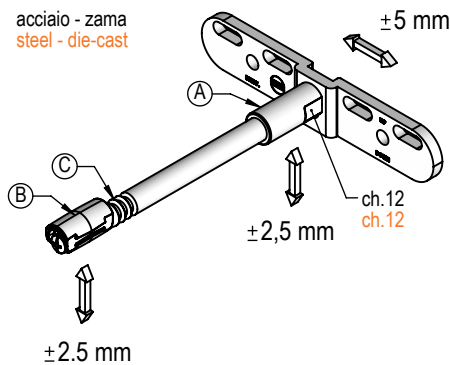
es./e.g.: MN112.150.02

Reggimensola a scomparsa tipo MN113

Invisible shelf support type MN113

CATAS[®]
Test Report 323919/1

acciaio - zama
steel - die-cast



CARATTERISTICHE
FONDAMENTALI:
DOPPIA REGOLAZIONE
"A" ORIZZONTALE E VERTICALE.
"B" INCLINAZIONE.
"C" POSSIBILITA' DI AVVITARE UN
GRANO NELLA GOLA PER EVITARE
LO SFILAMENTO DELLA MENSOLA.
SI CONSIGLIA DI FARE LE
REGOLAZIONI APPOGGIANDO LA
MENSOLA SUI REGGIMENSOLA, E
UNA VOLTA ESEGUITE LE
REGOLAZIONI INFILARE LA
MENSOLA NELLE OPPORTUNE
SEDI.

GENERAL ADVANTAGES:
DOUBLE ADJUSTMENTS
"A" HORIZONTAL ANDVERTICAL
"B" INCLINATION
"C" POSSIBILITY TO INSERT A
GRAIN FOR ANTI-DROP SYSTEM.
WE SUGGEST TO ADJUST BY
LOCATING THE SHELF UPON THE
SUPPORTS, AND INSERT IT AFTER
THE ADJUSTMENTS.

| tipo type | misura measure | A | B | finitura finishing | kg/ box | pcs/ box | box |
|--------------|-------------------|-----|-----|------------------------------|------------|-------------|-----|
| MN113. | 125. | 125 | 75 | 02 zincato bianco white zinc | 16,8 | 100 | B |
| | 150. | 150 | 105 | | 18,2 | | |
| | 175. | 175 | 130 | | 19,8 | | |

es./e.g.: MN113.150.02