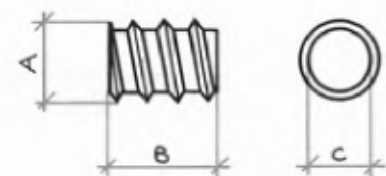
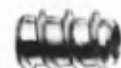


Codice Articolo
Article Number

0132

A	10	10	12	12	12	15		
B	12	14	14	20	24	18		
C	M.5	M.6	1/4	M.8	7/16	M.8	7/16	M.10

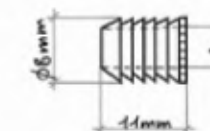


Bussola metallo
o ottone.
FINITURA: ferro
zincotropicalizzato,
ottone lucido.
MISURA: vedi tabella.
CONFEZIONE: pz. 500

Codice Articolo
Article Number

0507

A	M.4	M.5	M.6
---	-----	-----	-----

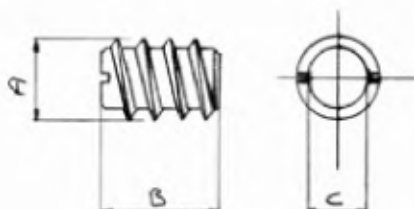


Bussola nylon
ad espansione.
COLORE: trasparente.
MISURA:
Ø 8x11xM.4
Ø 8x11xM.5
Ø 8x11xM.6
CONFEZIONE:
pz. 5.000

Codice Articolo
Article Number

0152

A	8	9	10	10	12
B	12	12	12	14	14
C	M.4	M.5	M.5	M.6	M.8

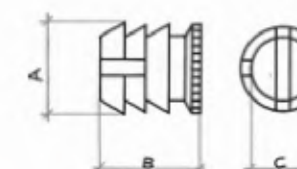


Bussola ottone con
taglio.
FINITURA: ottone
lucido.
MISURA: vedi tabella.
CONFEZIONE: pz. 500

Codice Articolo
Article Number

0513

A	11	11	11
B	11	11	13
C	M.4	M.6	M.6

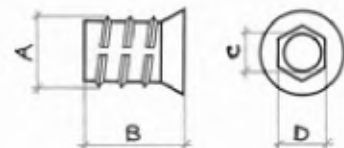


Bussola nylon.
COLORE: trasparente.
MISURA:
Ø 11x11xM.4
Ø 11x11xM.6
Ø 11x13xM.6
CONFEZIONE:
pz. 1.000

Codice Articolo
Article Number

0703

A	10	10	10	12	12	14		
B	13	15	20	15	20	18		
C	M.6	M.6	M.6	M.8	7/16	M.8	7/16	M.10
D	6	6	6	8	8	10		

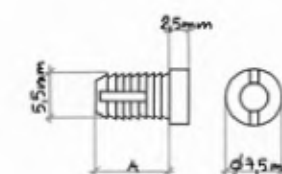


Bussola zama
pressofusa
con esagono
incassato.
MISURA: vedi tabella.
CONFEZIONE: pz. 500

Codice Articolo
Article Number

0540

A	7,8	9,5	13
---	-----	-----	----

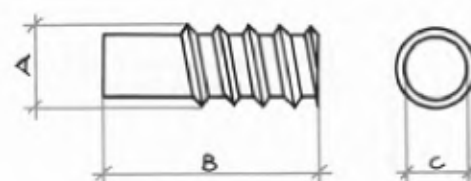


Bussoletta nylon
con testa.
COLORE: trasparente.
MISURA: mm. 7,8,
mm. 9,5, mm. 13.
CONFEZIONE:
pz. 5.000

Codice Articolo
Article Number

0248

A	10	10	12	
B	25	28	30	
C	M.6	1/4	M.8	7/16

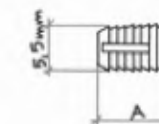


Spinotto metallo
o ottone con ribasso.
FINITURA: ferro
zincotropicalizzato,
ottone lucido.
MISURA: vedi tabella.
CONFEZIONE: pz. 500

Codice Articolo
Article Number

0541

A	7,8	9,5	13
---	-----	-----	----



Bussoletta nylon
senza testa.
COLORE: trasparente.
MISURA: mm. 7,8,
mm. 9,5, mm. 13.
CONFEZIONE:
pz. 5.000