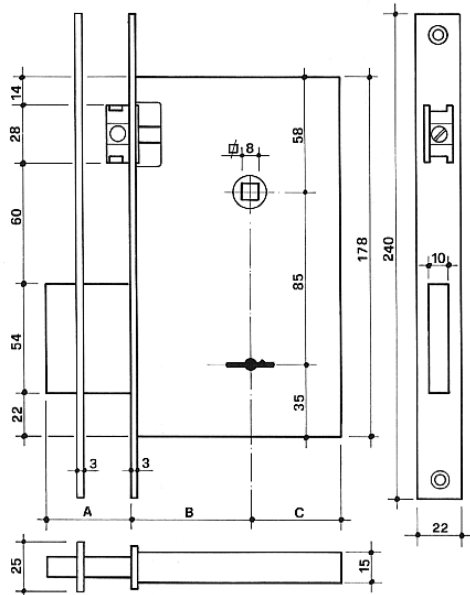




## SERRATURE ARTICOLO / MORTISE ARTICLE 100X – 101X



### SERRATURE DA INFILARE CON SCROCCO 6 LEVE ANTIMANIPOLAZIONE

3 CHIAVI  
CONTROPIASTRA  
COPRITOPPA (INTERNO / ESTERNO)  
SCROCCO REVERSIBILE  
VITI DI FISSAGGIO

FRONTALE CROMATO, CORPO CROMOZINCATO,  
CHIAVI NICHELATE.

(Trattamenti conformi Direttiva 2002/95/CE, RHOS)

### MORTISE LOCKS WITH SPRING LATCH 6 LEVERS ANTIMANIPULATION

3 KEYS  
STRIKING PLATE  
KEYHOLE COVER (INSIDE/OUTSIDE)  
REVERSIBLE LATCH  
FIXING SCREWS

CHROMIUM-PLATED FORENT, CHROME-ZINCED BODY,  
NICKEL PLATED KEYS (RHOS).

(Treatments conform to directives 2002/95/CE, RHOS)

ARTICOLO - ITEM		1004	1005	1006	1007	1016	1017
MANDATE - KEY TURNS		2	2	2	2	4	4
	A=	21	21	21	21	41	41
ENTRATA	B=	40	50	60	70	60	70
	C=	36	36	36	36	49	49
PESO - WEIGHT	Kg.	1,02	1,09	1,17	1,24	1,35	1,42