

### 11.1 Chiavi di regolazione



No

€  
(100 = 100 pz.)

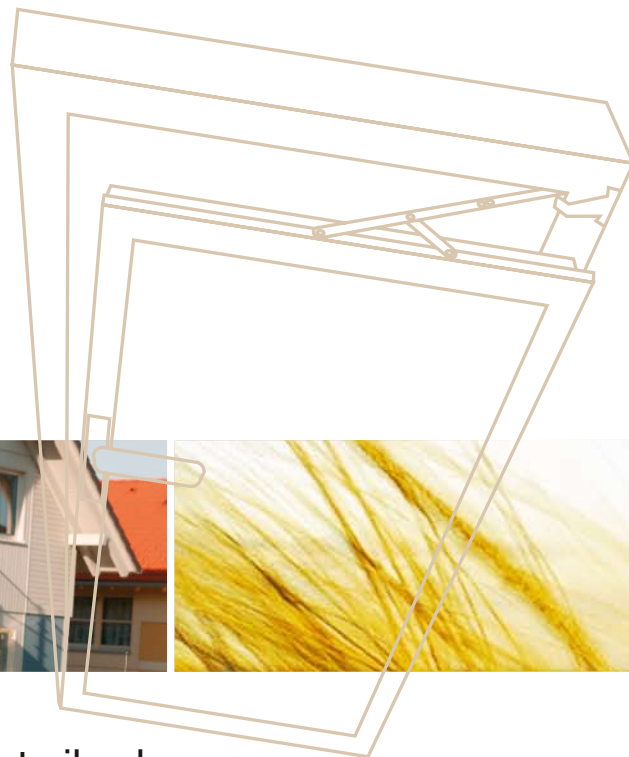
Chiave aggancio forbici ad angolo TX20	50	A	<b>40680</b>	
Chiave di regolazione universale, manico in plastica	20 1	B	<b>206417</b>	
Chiave per tutti i perni supporto forbice manico in plastica	20	C	<b>28620</b>	
Chiave regolazione cerniera angolare a brugola da 4 75x75 doppia zancatura	50	D	<b>41017</b>	
Chiave regolazione forbici e nottolini argento	50	E	<b>20947</b>	
Chiave regolazione per fungo TX15 doppia zancatura	50	F	<b>44192</b>	
Chiave regolazione per fungo TX15 e brugola 4	100	G	<b>43647</b>	
Punta segna fori	100	H	<b>42465</b>	

VALORIZZIAMO IL SERRAMENTO



# MACO MULTI

SISTEMI PER ANTA/RIBALTA



La precisione aumenta il valore



## La precisione aumenta il valore



### **Chiave di regolazione universale**

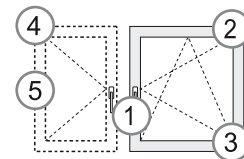
Dietro la produzione di una finestra ci sono sempre tanto impegno ed un lavoro preciso ed accurato. Il culmine di questa prestazione si ha con l'installazione e la regolazione della finestra dal cliente. Per eseguire tutte le varie tipologie di regolazione sulle finestre in modo semplice e veloce, Maico ha ideato e sviluppato la chiave di regolazione universale. Unitamente alle istruzioni per la giusta regolazione della finestra ed all'esperienza dei tecnici montatori, questa è la base per creare la soddisfazione dei Vostri clienti.



## Indice

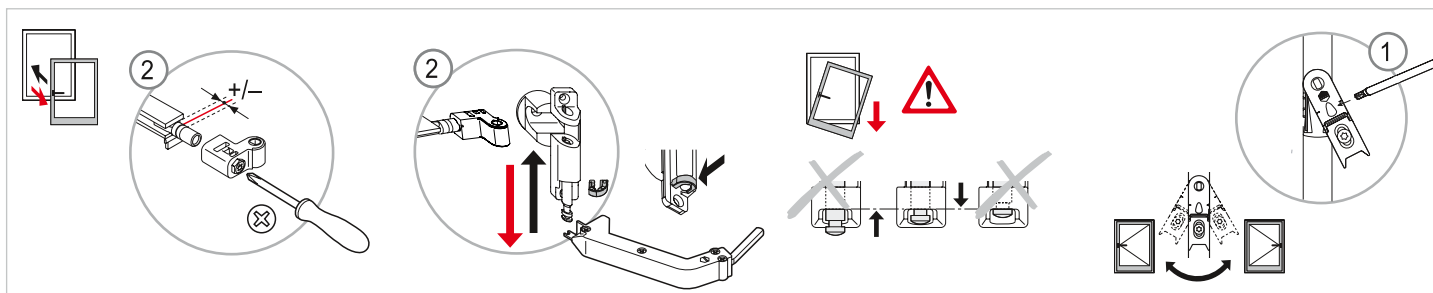
<b>Finestre in legno con cerniere ad incasso .....</b>	<b>4</b>
Finestre rettangolari a uno e più battenti.....	4
Finestre ad arco .....	6
Finestre a trapezio (con forbice per finestre a trapezio).....	8
Finestre a trapezio (con forbice per finestre ad arco) .....	10
<b>Finestre in legno con cerniere a doppia tazza ...</b>	<b>12</b>
Finestre rettangolari a uno e più battenti.....	12
Finestre ad arco .....	14
Finestre a trapezio (con forbice per finestre a trapezio).....	16
Finestre a trapezio (con forbice per finestre ad arco) .....	18
<b>Finestre in PVC e misti (alluminio-legno).....</b>	<b>20</b>
Finestre rettangolari a uno e più battenti.....	20
Finestre ad arco .....	22
Finestre a trapezio (con forbice per finestre a trapezio).....	24
Finestre a trapezio (con forbice per finestre ad arco) .....	26
<b>Consigli per la manutenzione.....</b>	<b>28</b>

MACO  
MULTI

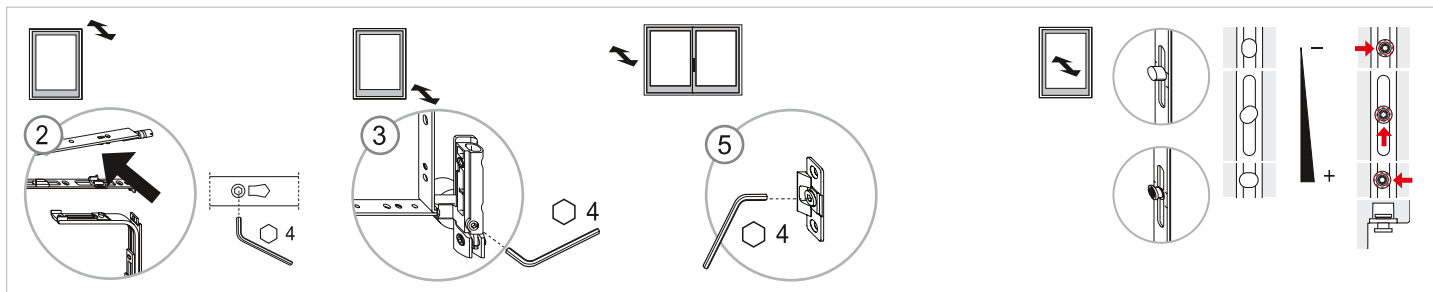


## Finestre rettangolari ad uno e più battenti

### Montaggio del battente

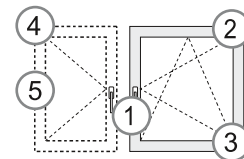


### Regolazioni della pressione

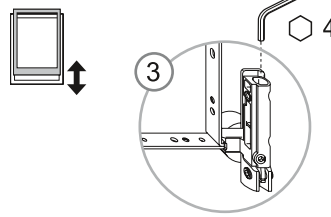
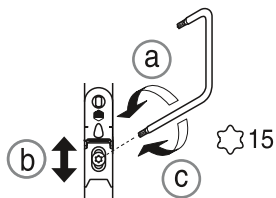
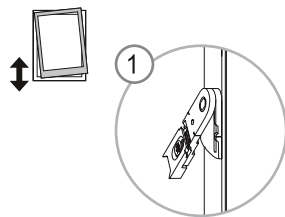
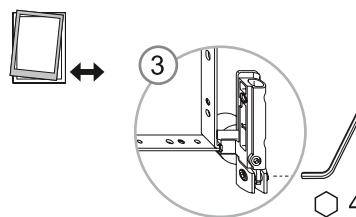
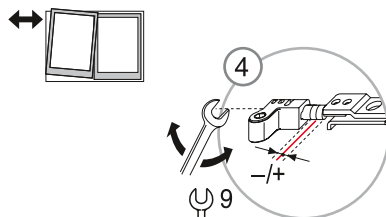
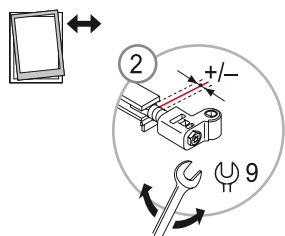


Finestre in legno con cerniere ad incasso

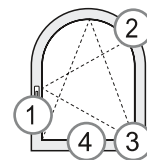
MACO  
MULTI



## Regolazioni dell'anta

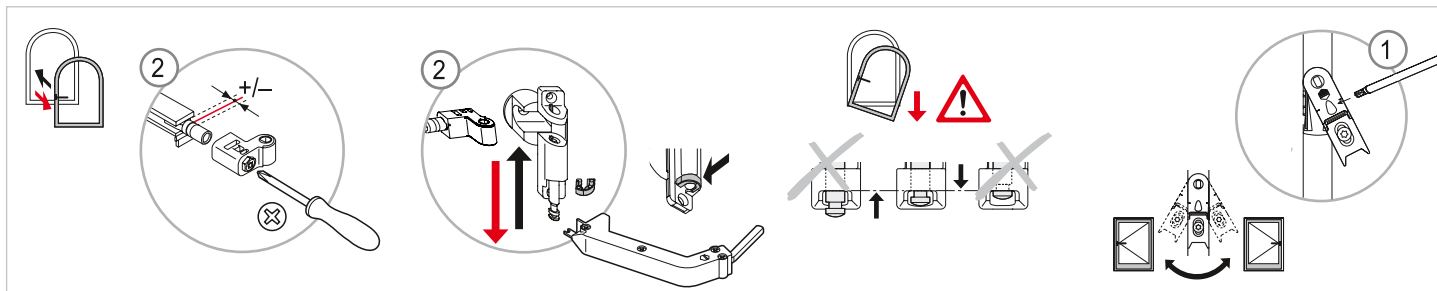


MACO  
MULTI

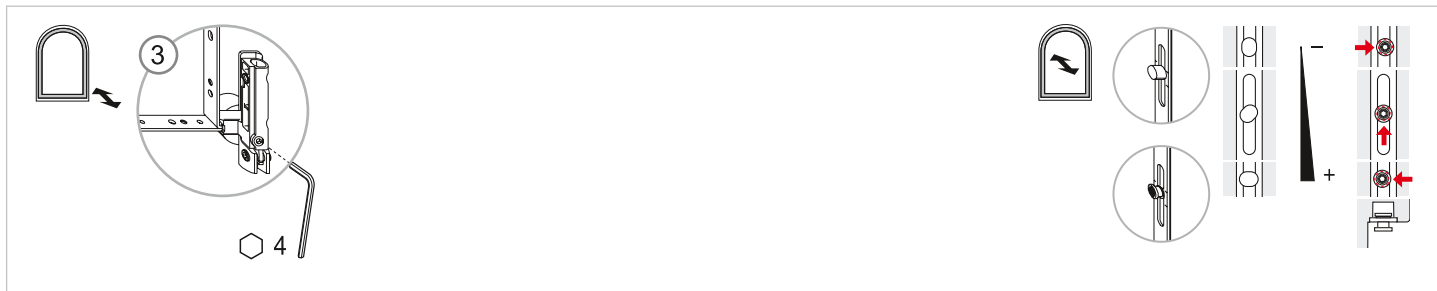


## Finestre ad arco

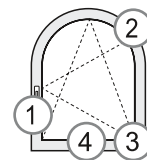
### Montaggio del battente



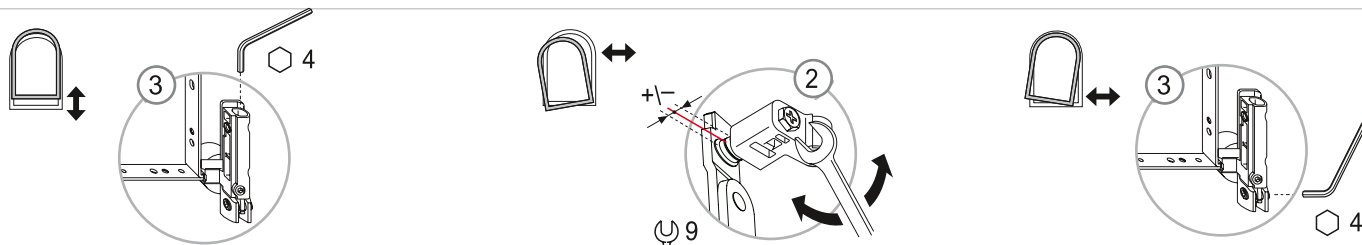
### Regolazioni della pressione



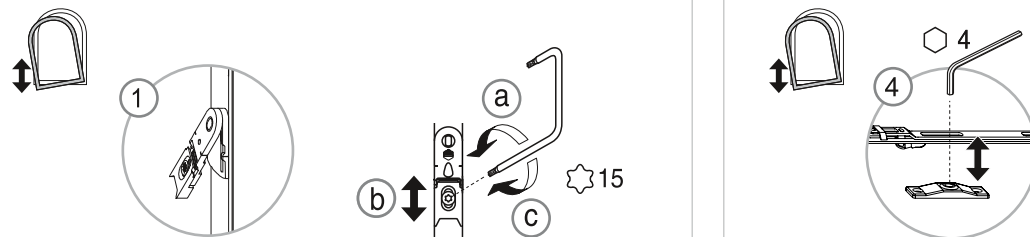
MACO  
MULTI



## 1. Regolazioni del funzionamento ad anta

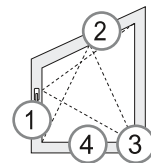


## 2. Regolazione del funzionamento a ribalta



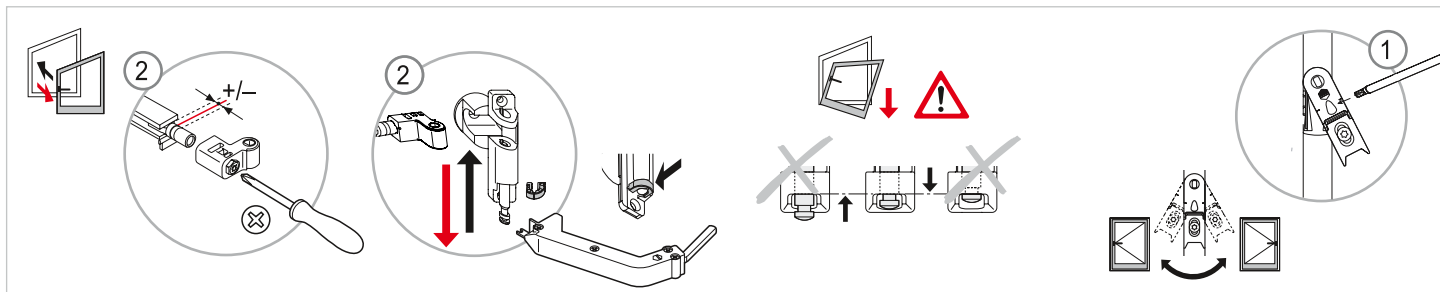


MACO  
MULTI

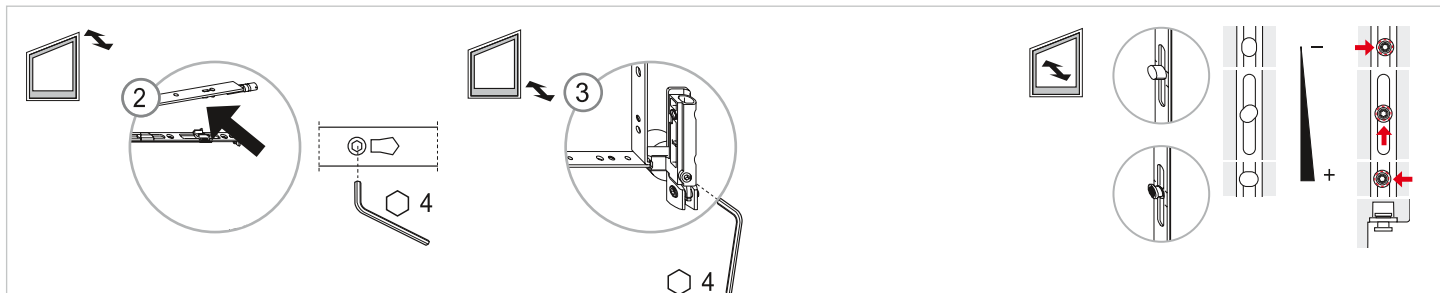


## Finestre a trapezio (con forbice per finestre a trapezio)

### Montaggio del battente

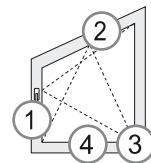


### Regolazioni della pressione

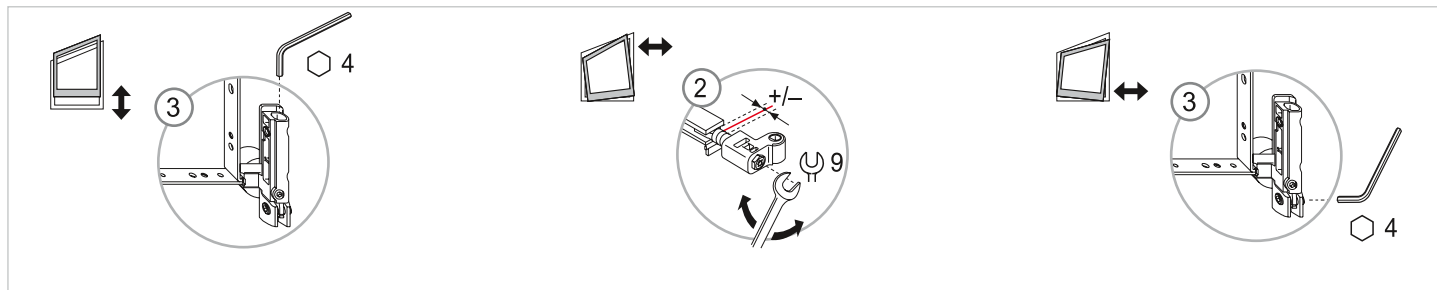


Finestre in legno con cerniere ad incasso

MACO  
MULTI



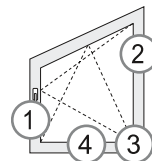
## 1. Regolazioni del funzionamento ad anta



## 2. Regolazione del funzionamento a ribalta

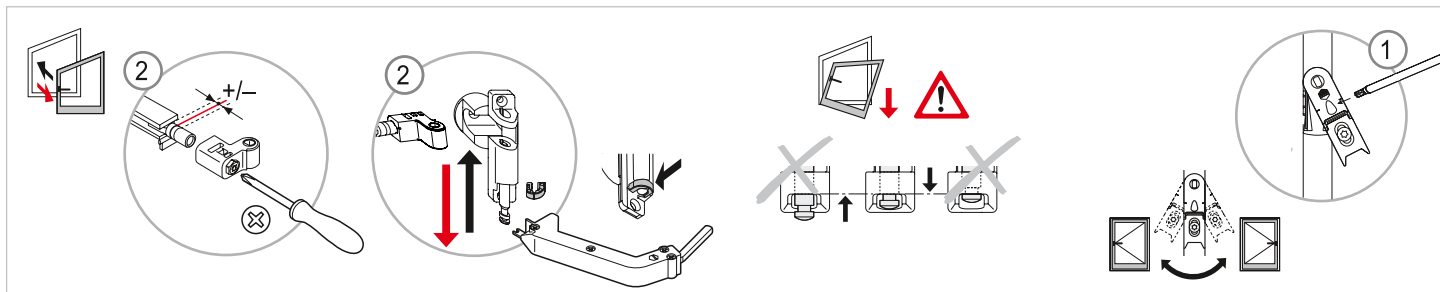


MACO  
MULTI

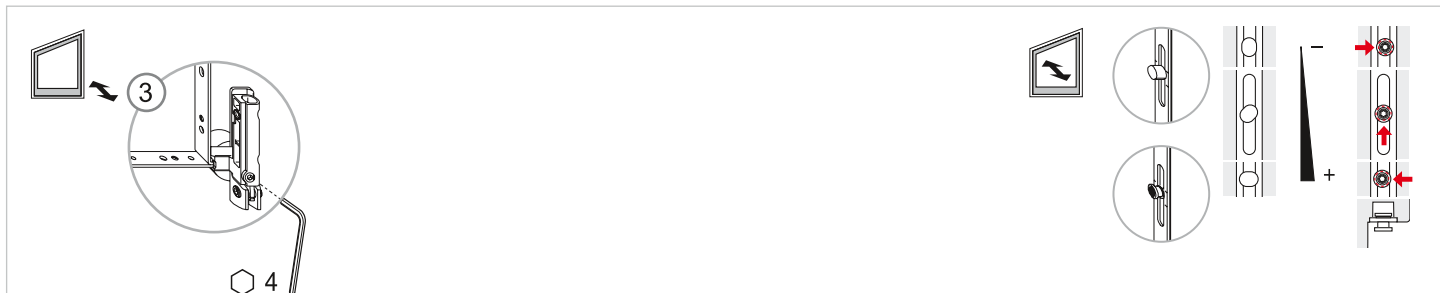


## Finestre a trapezio (con forbice per finestre ad arco)

### Montaggio del battente

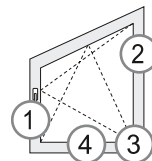


### Regolazioni della pressione

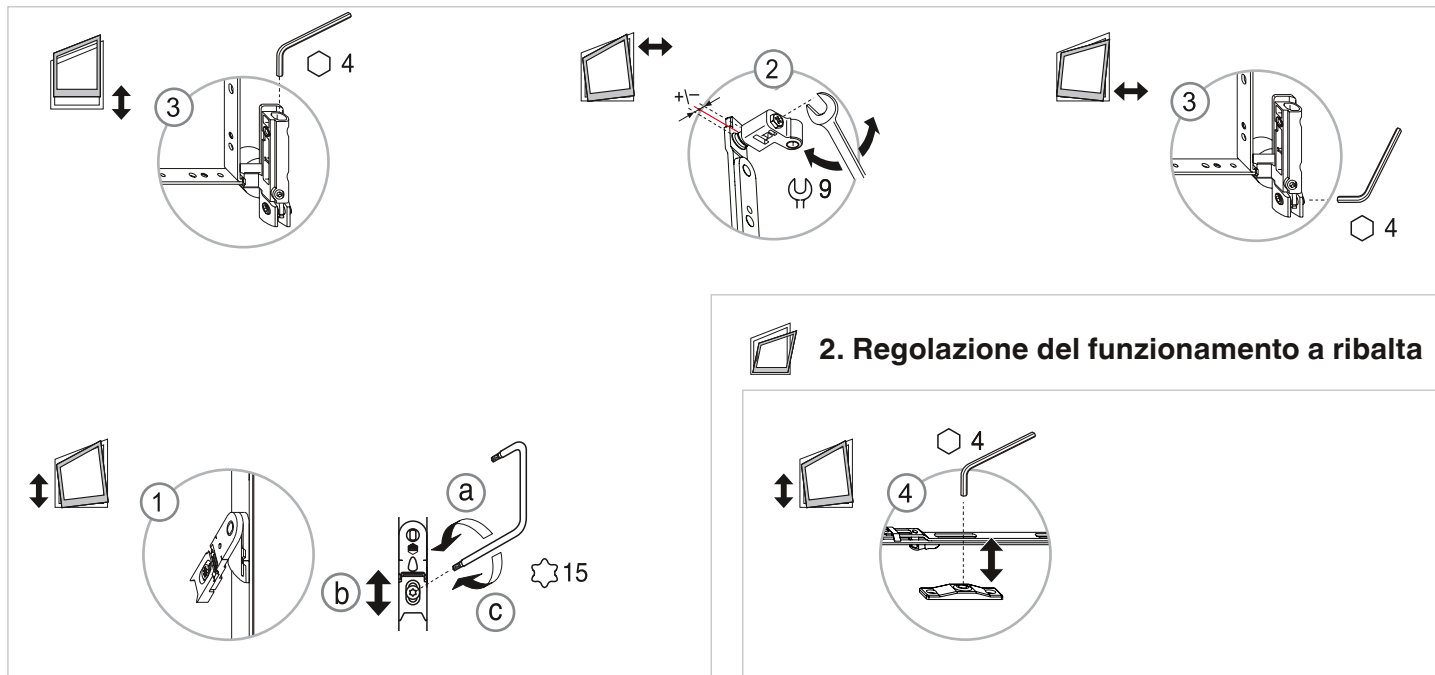


Finestre in legno con cerniere ad incasso

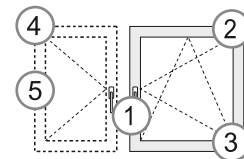
MACO  
MULTI



## 1. Regolazioni del funzionamento ad anta

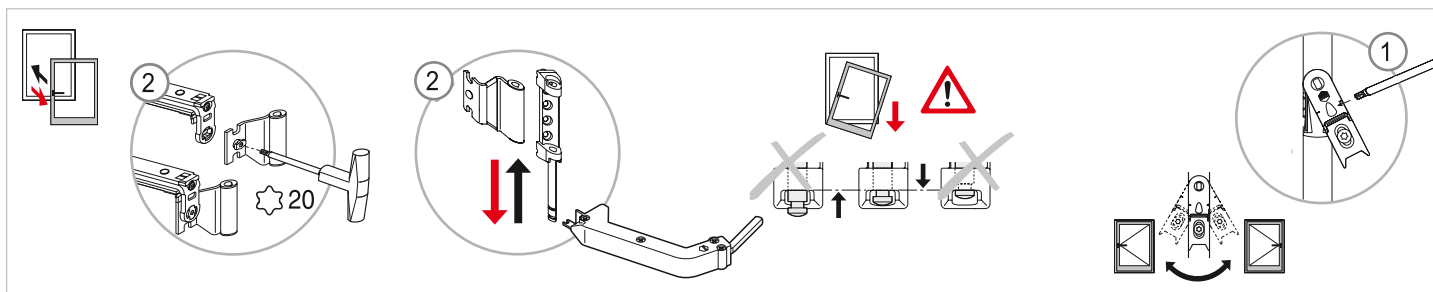


MACO  
MULTI

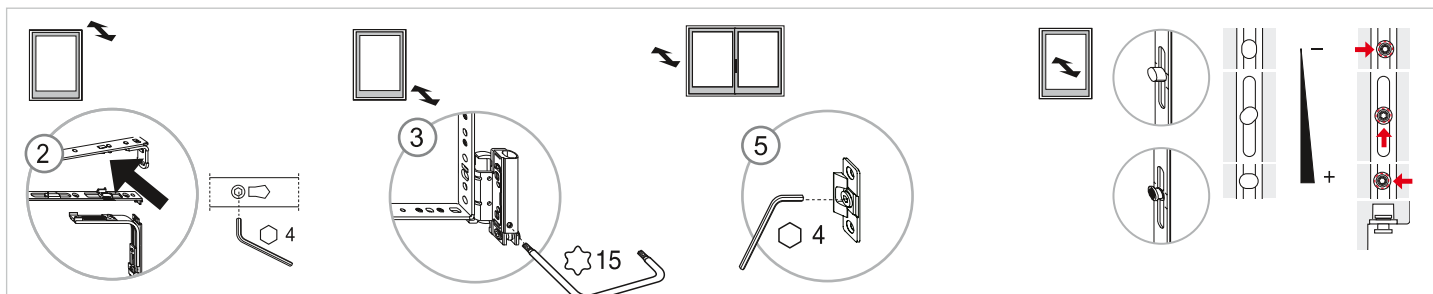


## Finestre rettangolari ad uno e più battenti

### Montaggio del battente

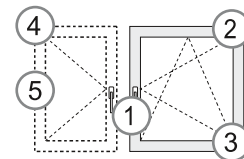


### Regolazioni della pressione

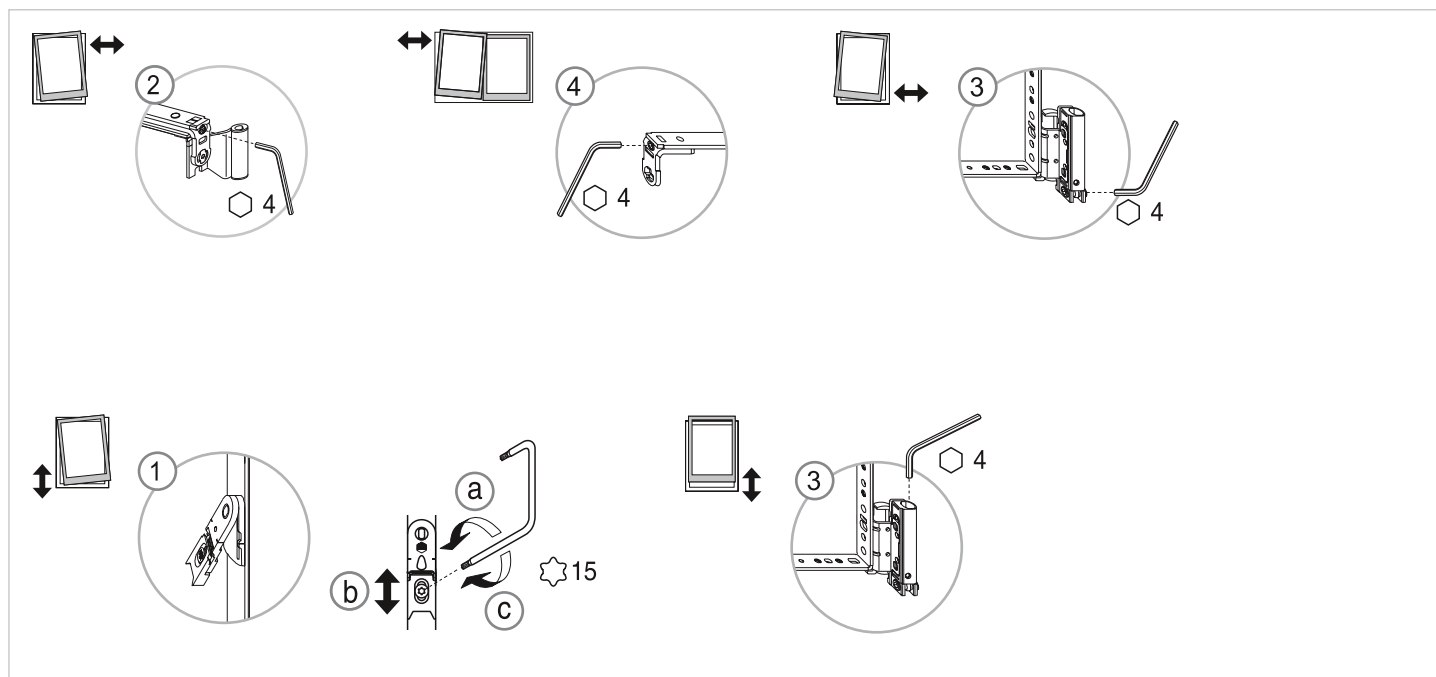


Finestre in legno con cerniere a doppia tazza

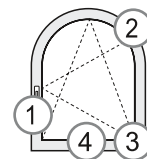
MACO  
MULTI



## Regolazioni dell'anta

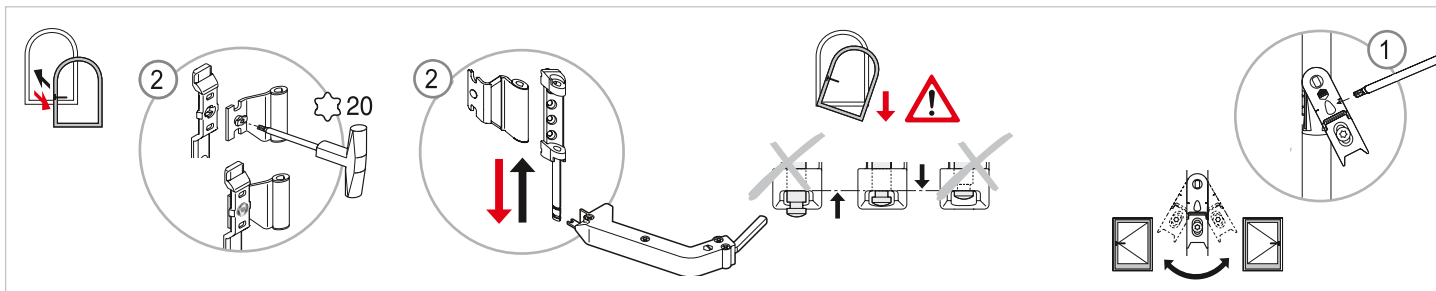


MACO  
MULTI

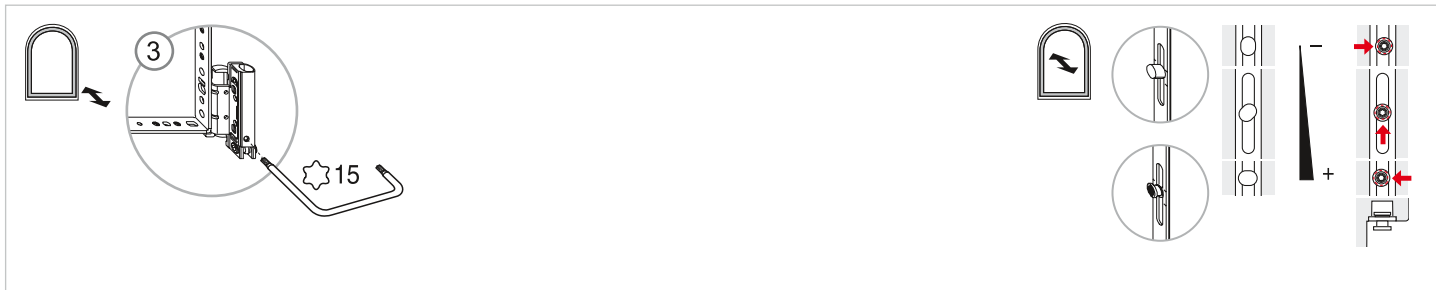


## Finestre ad arco

### Montaggio del battente

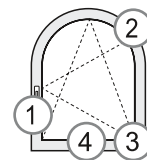


### Regolazioni della pressione

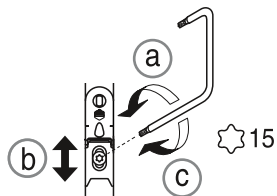
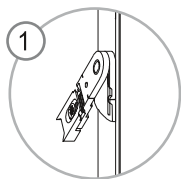
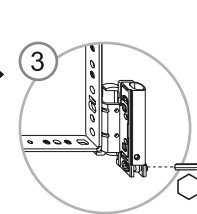
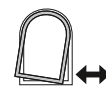
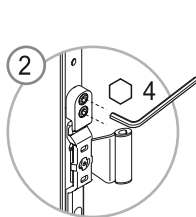
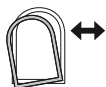
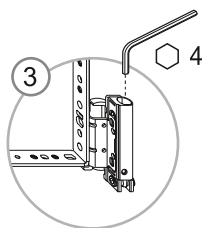


Finestre in legno con cerniere a doppia tazza

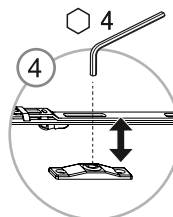
MACO  
MULTI



## 1. Regolazioni del funzionamento ad anta

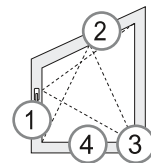


## 2. Regolazione del funzionamento a ribalta



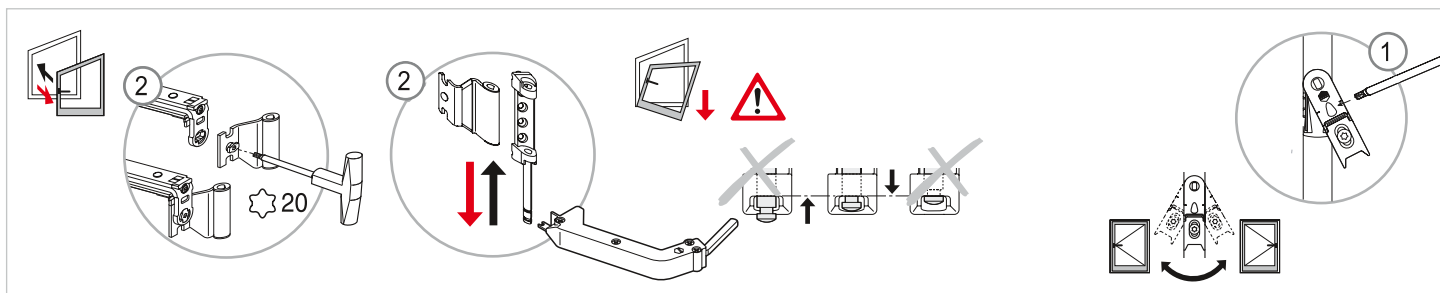


MACO  
MULTI

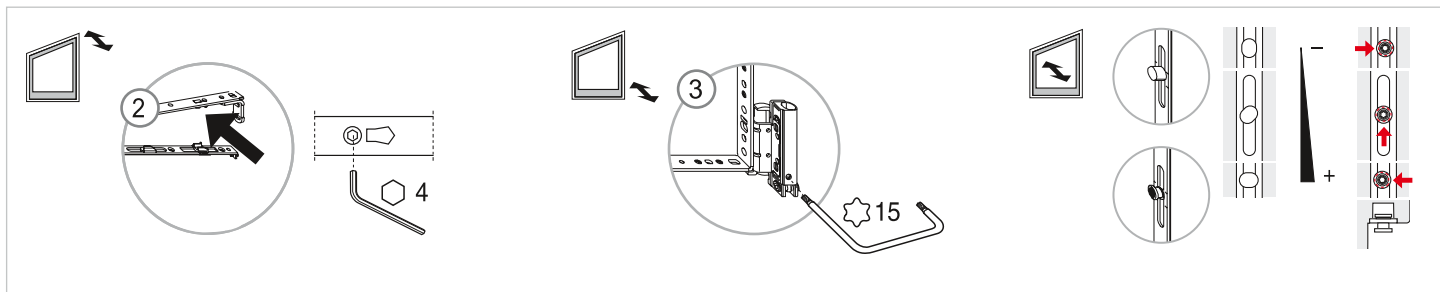


## Finestre a trapezio (con forbice per finestre a trapezio)

### Montaggio del battente

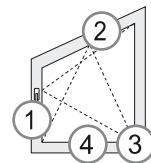


### Regolazioni della pressione

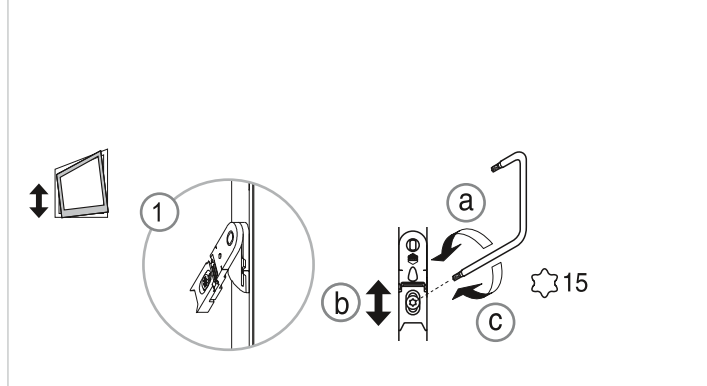
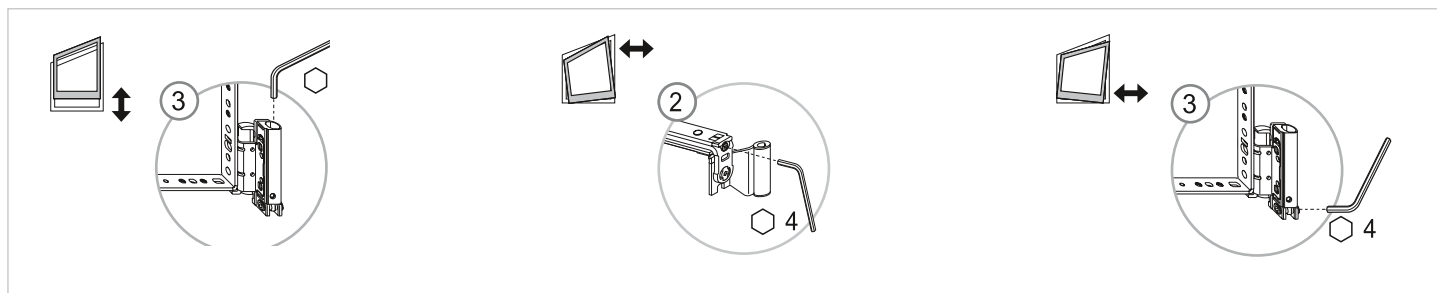


Finestre in legno con cerniere a doppia tazza

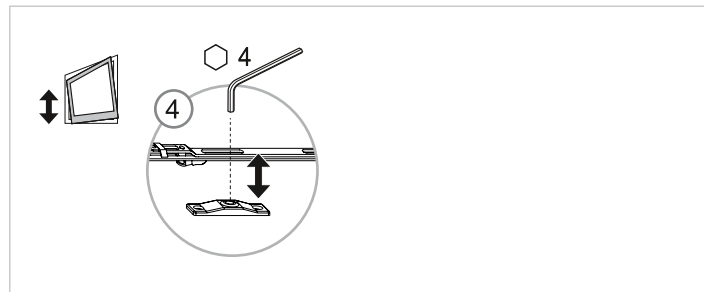
MACO  
MULTI



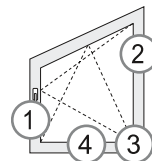
## 1. Regolazioni del funzionamento ad anta



## 2. Regolazione del funzionamento a ribalta

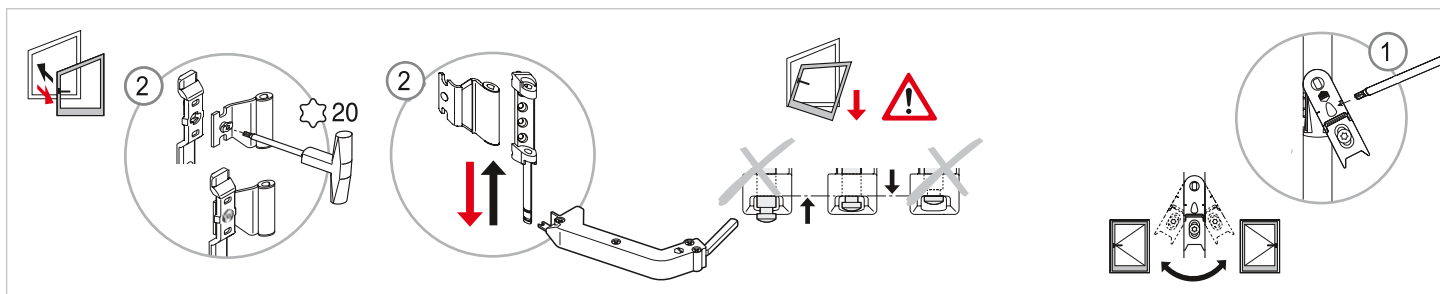


MACO  
MULTI

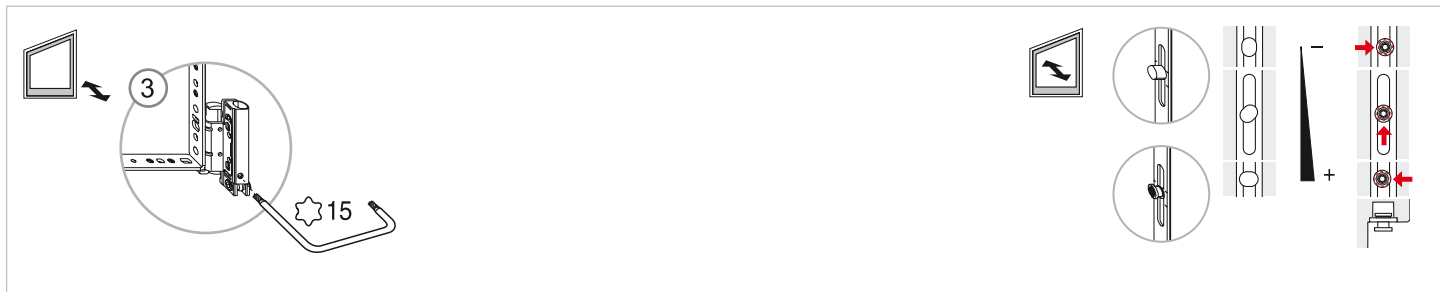


## Finestre a trapezio (con forbice per finestre ad arco)

### Montaggio del battente

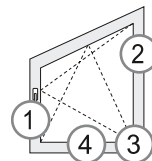


### Regolazioni della pressione

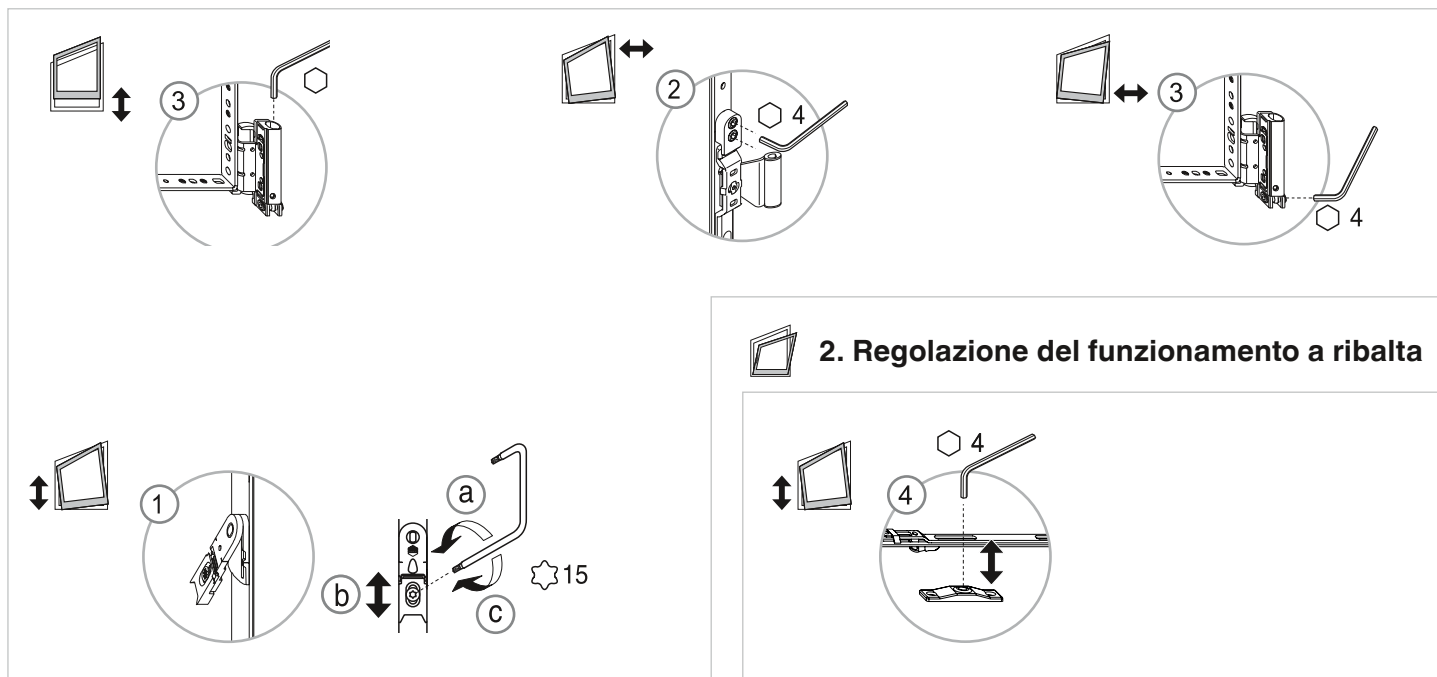


Finestre in legno con cerniere a doppia tazza

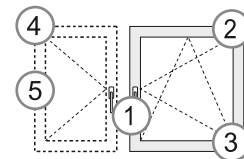
MACO  
MULTI



## 1. Regolazioni del funzionamento ad anta

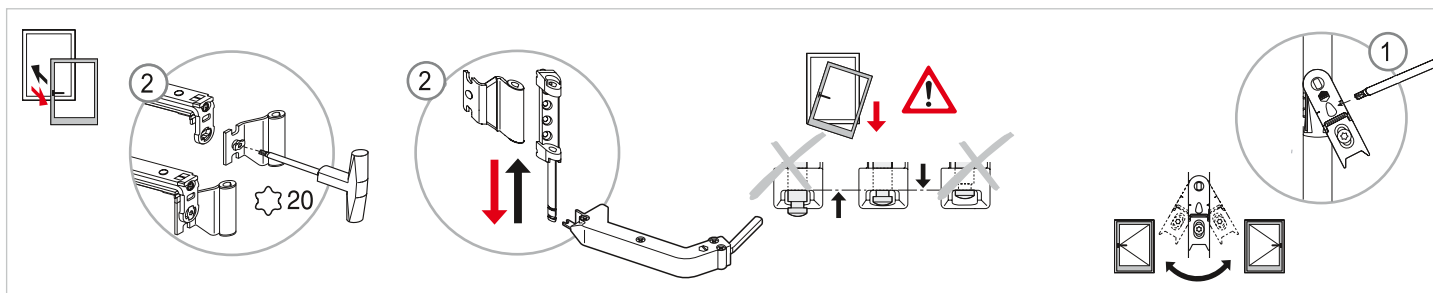


MACO  
MULTI

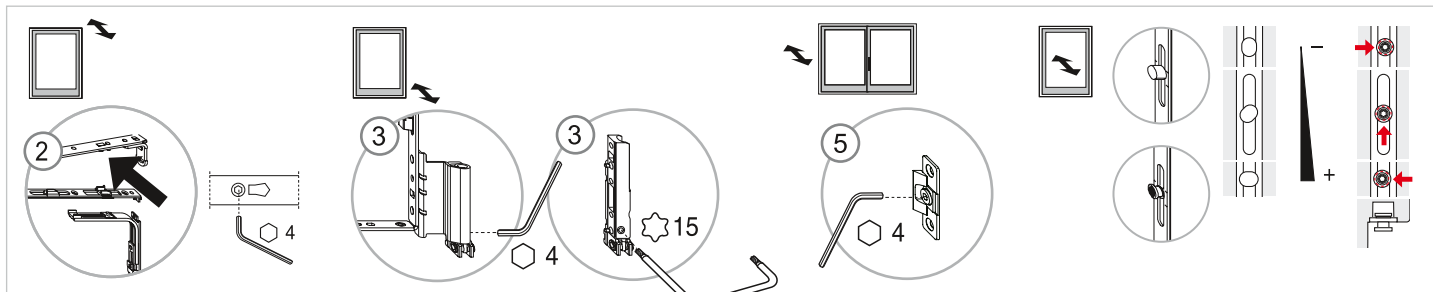


## Finestre rettangolari ad uno e più battenti

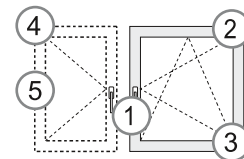
### Montaggio del battente



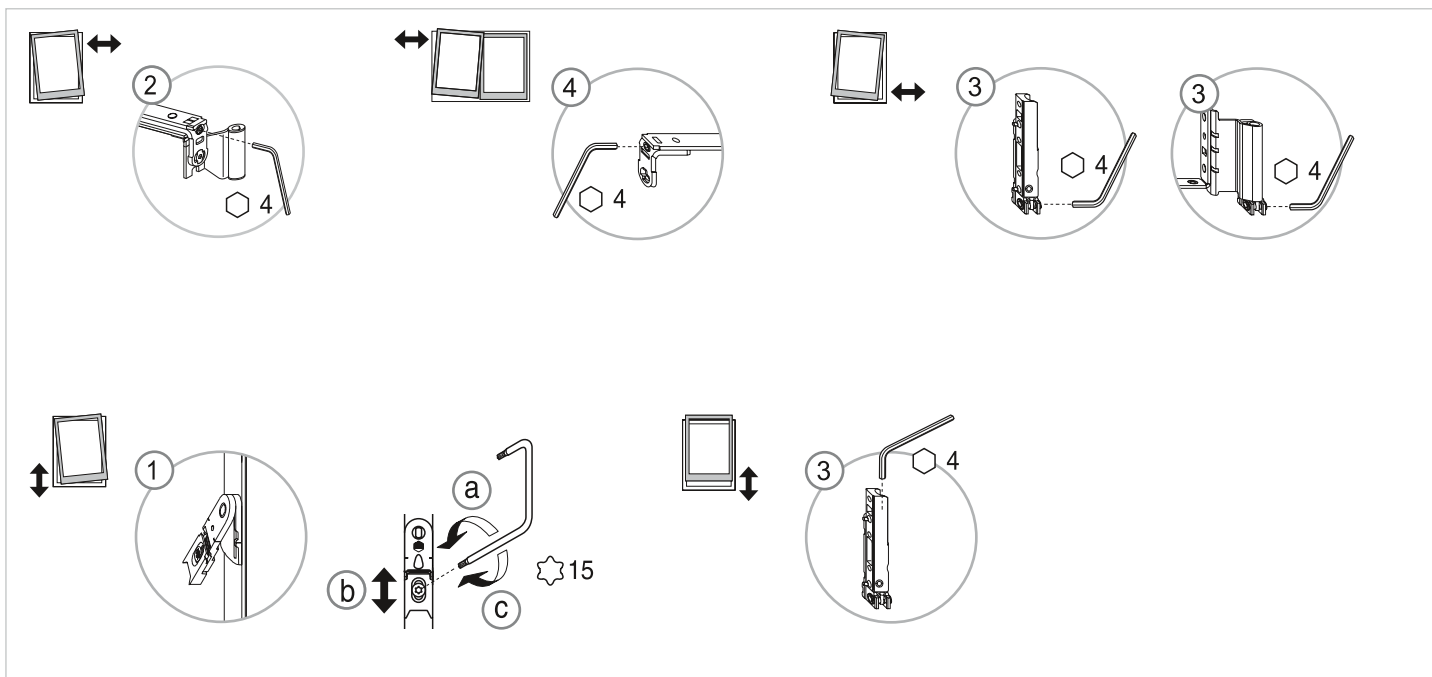
### Regolazioni della pressione



MACO  
MULTI

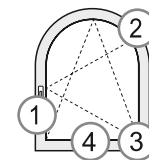


## Regolazioni dell'anta

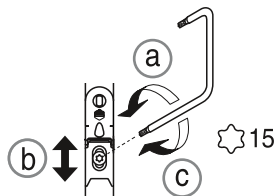
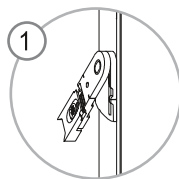
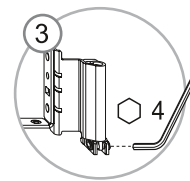
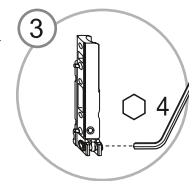
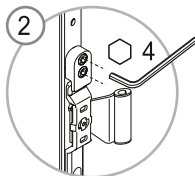
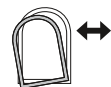
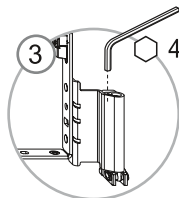
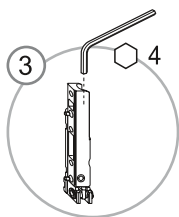




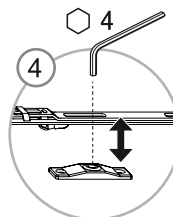
MACO  
MULTI



## 1. Regolazioni del funzionamento ad anta



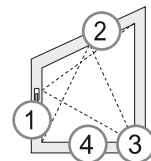
## 2. Regolazione del funzionamento a ribalta



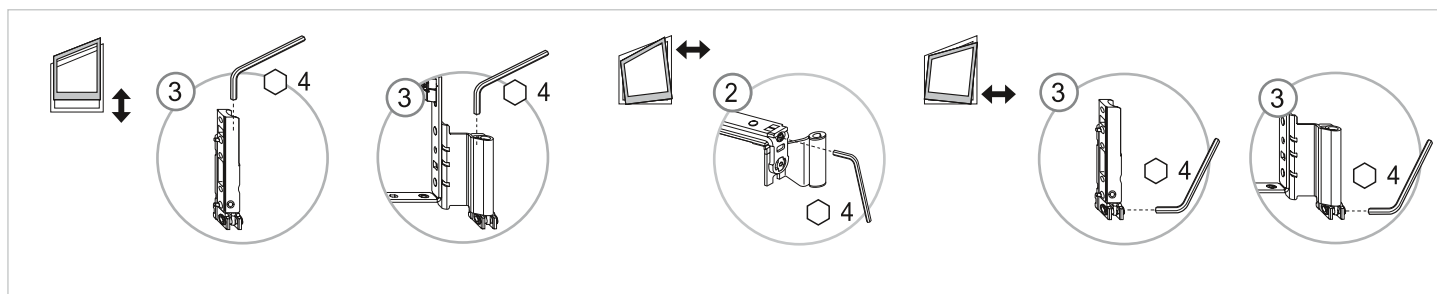




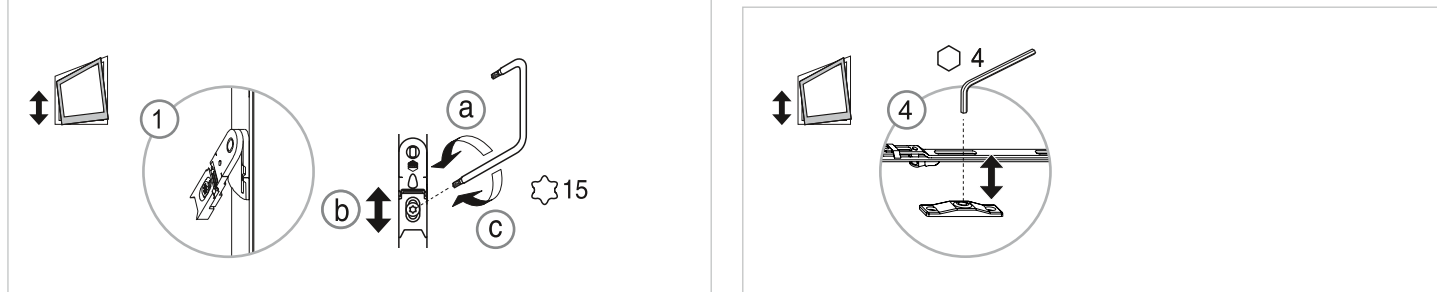
MACO  
MULTI



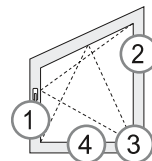
## 1. Regolazioni del funzionamento ad anta



## 2. Regolazione del funzionamento a ribalta

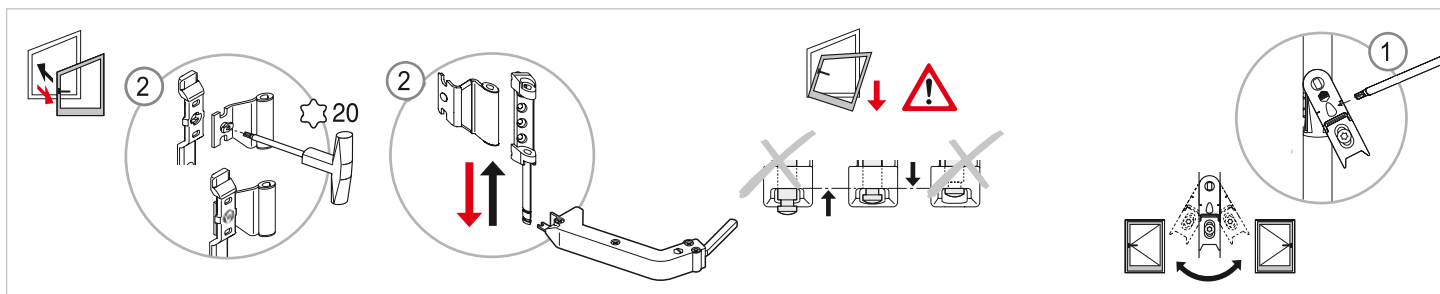


MACO  
MULTI

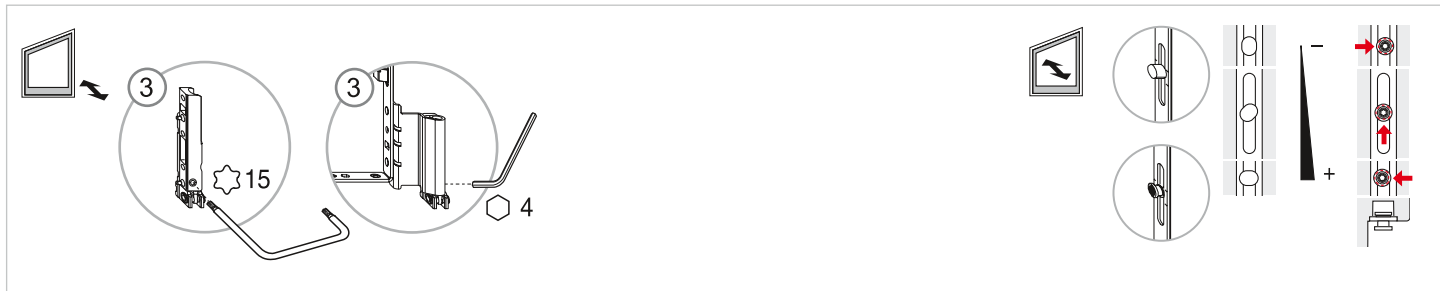


## Finestre a trapezio (con forbice per finestre ad arco)

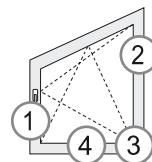
### Montaggio del battente



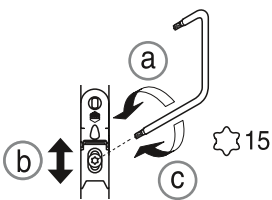
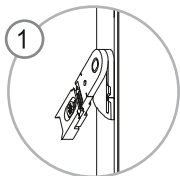
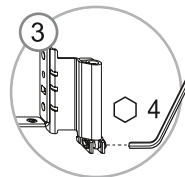
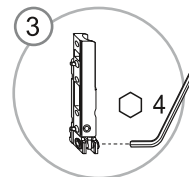
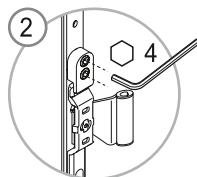
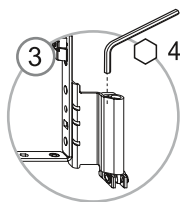
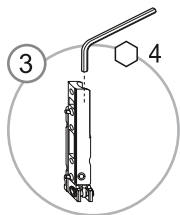
### Regolazioni della pressione



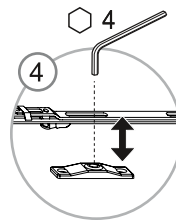
MACO  
MULTI



## 1. Regolazioni del funzionamento ad anta



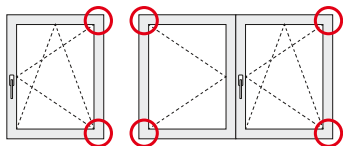
## 2. Regolazione del funzionamento a ribalta



MACO  
MULTI



## Note e consigli



Le regolazioni sui meccanismi devono essere effettuate solo da personale competente!

Controllare lo stato di usura dei pezzi rilevanti ai fini della sicurezza della finestra (controllo costante – minimo una volta l'anno)!

Verificarsi se è necessario o consigliabile applicare sulla finestra un adesivo con le istruzioni per l'uso della finestra stessa.

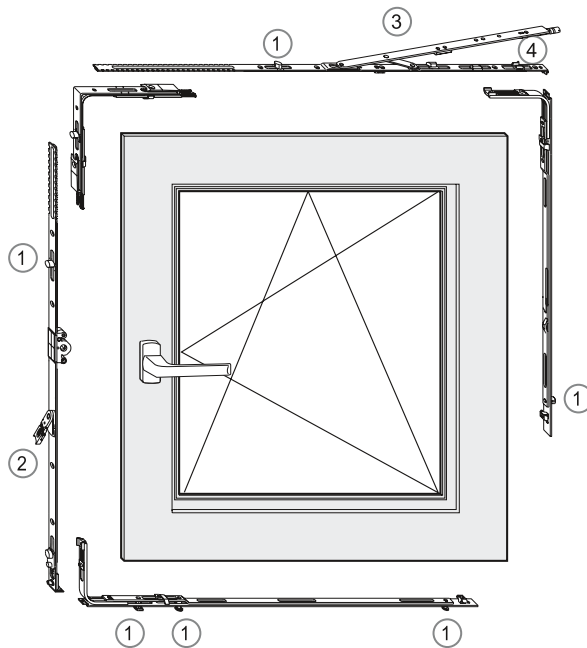
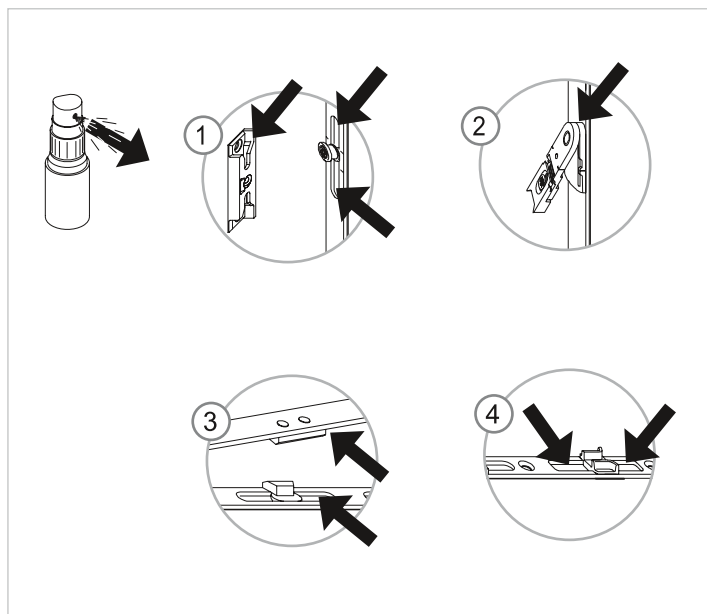
Sono disponibili particolari accessori da utilizzare in luoghi soggetti a forti correnti d'aria che evitano lo sbattere delle finestre aperte sia ad anta che a ribalta.

Sono disponibili le guide all'utilizzo ed alla manutenzione per il Vostro cliente, contenenti informazioni preziose per garantire una lunga durata ed una funzionalità perfetta della finestra nel tempo.

MACO  
MULTI



## Manutenzione (almeno una volta all'anno)









**MAICO SRL**  
ZONA ARTIGIANALE, 15  
I-39015 S. LEONARDO (BZ)  
TEL +39 0473 65 12 00  
FAX +39 0473 65 13 00  
info@maico.com  
www.maico.com



**MAYER & CO  
BESCHLÄGE GMBH**  
maco@maco.at  
AUSTRIA

**MACO-BESCHLÄGE  
GESELLSCHAFT MBH**  
d-maco@maco.de  
GERMANIA

**MAICO SRL**  
info@maico.com  
ITALIA

**LE AZIENDE DEL GRUPPO MACO**

**MACO DOOR & WINDOW  
HARDWARE LTD**  
maco@macouk.net  
GRAN BRETAGNA

**MACO-BESCHLÄGE B.V.**  
info@maco-nl.nl  
PAESI BASSI

**MACO HARDWARE  
(TIANJIN) CO., LTD.**  
j.zhang@maco.at  
CINA

**MACO-POLSKA**  
maco@maco.at  
POLONIA

