
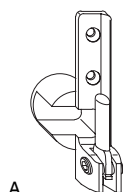
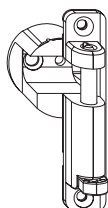
**8.2.2 Angolo cerniera ad incasso**

				kg		No	€ (/oo = 100 pz.)
argento	con fissaggio battuta	destro	4/18-9	130	50		55239
			4/15-9	130	50	A	55410
			12/20-9	130	50		54724
			12/18-9	130	50		52394
		sinistro	4/18-9	130	50		55240
			4/15-9	130	50		55411
			12/20-9	130	50		54725
			12/18-9	130	50		52395
Tricoat	con fissaggio battuta	destro	4/18-9	130	50		204140
			4/15-9	130	50		202514
			12/20-9	130	50		204816
			12/18-9	130	50		201480
		sinistro	4/18-9	130	50		203704
			4/15-9	130	50		202518
			12/20-9	130	50		204817
			12/18-9	130	50		201478



**8.2.1 Supporto cerniera ad incasso**

				kg		No	€ (/oo = 100 pz.)
argento	destro	4/18	130 ¹	50		55237	
		4/15	130 ¹	50	A	55412	
		12/20	130 ¹	50		54722	
		12/18	130 ¹	50		52399	
	sinistro	4/18	130 ¹	50		55238	
		4/15	130 ¹	50		55413	
		12/20	130 ¹	50		54723	
		12/18	130 ¹	50		52398	
Tricoat	destro	4/18	130 ¹	50		204139	
		4/15	130 ¹	50		202513	
		12/20	130 ¹	50		204814	
		12/18	130 ¹	50		201489	
	sinistro	4/18	130 ¹	50		203706	
		4/15	130 ¹	50		202517	
		12/20	130 ¹	50		204815	
		12/18	130 ¹	50		201485	

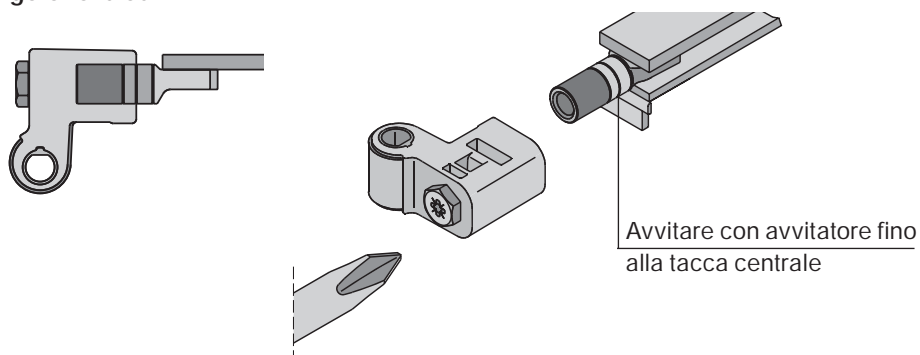
¹ A partire 100 kg avvitare le viti centrali inclinate.



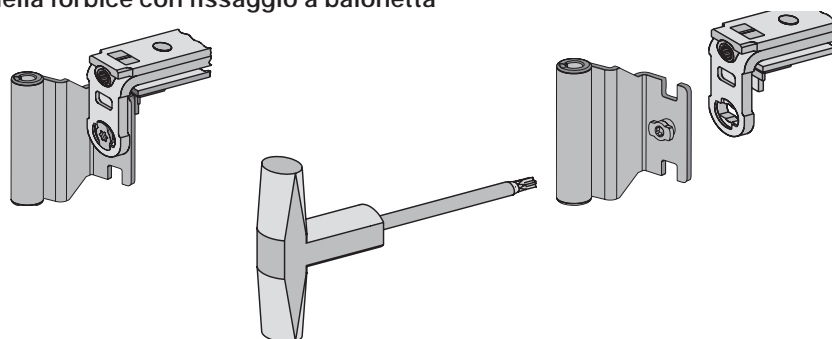
A

7.2.1.1 Supporto forbice ad incasso 130 kg						N°	€ (100 = 100 pz.)	
argento	destro	4/18-9	130	50	A	55235		
		4/15-9	130	50		55414		
		12/20-9	130	50		54716		
		12/18-9	130	50		52396		
	sinistro	4/18-9	130	50		55236		
		4/15-9	130	50		55415		
		12/20-9	130	50		54717		
		12/18-9	130	50		52397		
	Tricoat	destro	4/18-9	130		50	204138	
			4/15-9	130		50	202511	
			12/20-9	130		50	204609	
			12/18-9	130		50	201479	
sinistro		4/18-9	130	50	203705			
		4/15-9	130	50	202515			
		12/20-9	130	50	204610			
		12/18-9	130	50	201474			

Dis. 2
Angolo forbice

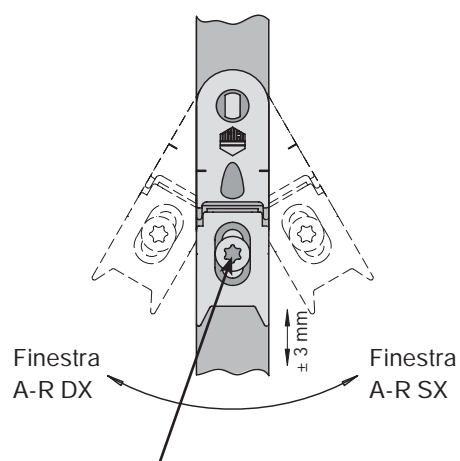


Dis. 3
Bandella forbice con fissaggio a baionetta



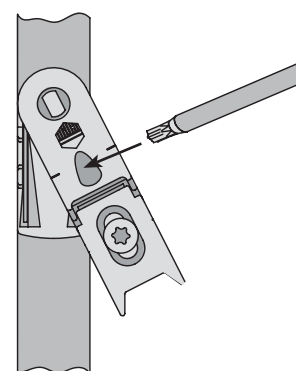
Il fissaggio a baionetta deve essere girato di 90°!

Regolazione dispositivo alza-anta



- allentare la vite con chiave Torx 15
- posizionare in altezza
- serrare

Reversibilità del dispositivo alza-anta

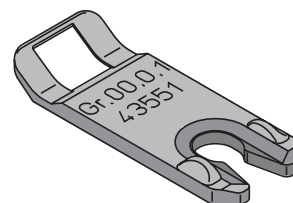
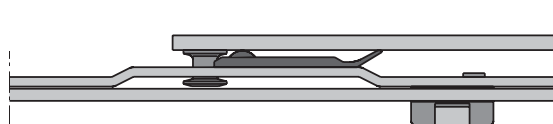


- premere la molla con la chiave Torx 15 (Cod. 44192)
- portare il dispositivo alza anta in posizione centrale

Con l'aria giusta sul traverso inferiore, occorre mantenere un'aria di 0,5 mm fra dispositivo alza anta e scontro.

Delimitatore d'apertura per forbici

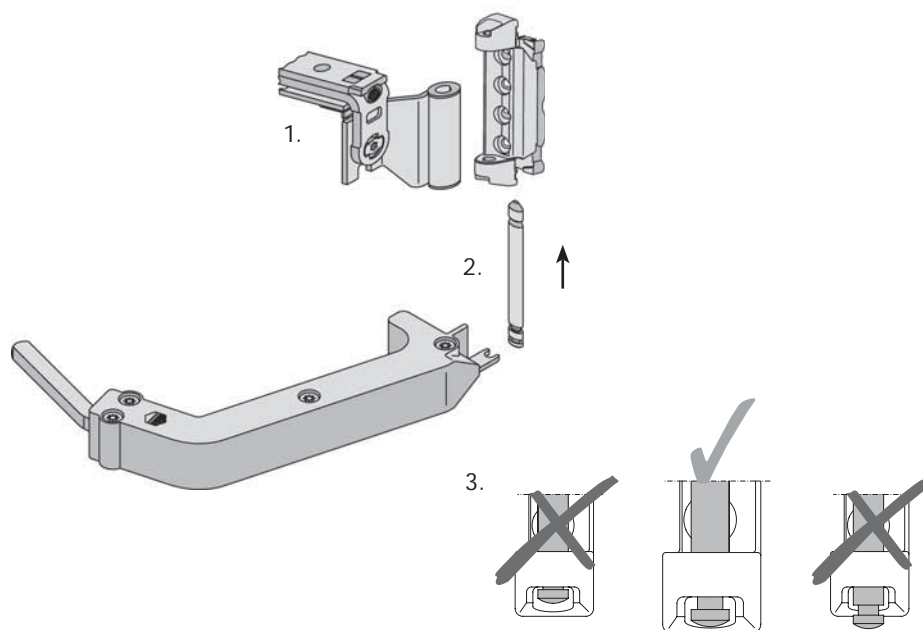
Con HBB inferiore a 600 mm bisogna montare un delimitatore d'apertura per forbici. A causa delle diverse battute, questo può rendersi necessario già con HBB inferiore a 800 mm.



Aggancio dell'anta sul telaio – esecuzione con doppia tazza

Inserire l'anta con un angolo d'inclinazione di 90° nella cerniera angolare.

1. Inserire la bandella nel supporto forbice e chiudere l'anta (non serrarla).
2. Inserire fino in fondo (scatto) il perno del supporto forbice.
3. È assolutamente indispensabile un controllo visivo della posizione del perno supporto forbice (vedi dis.)!

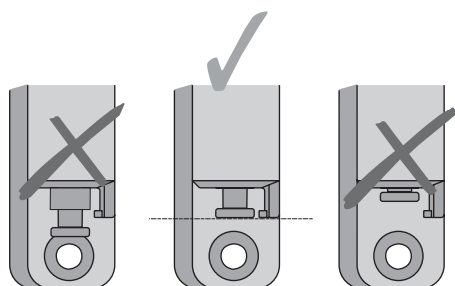
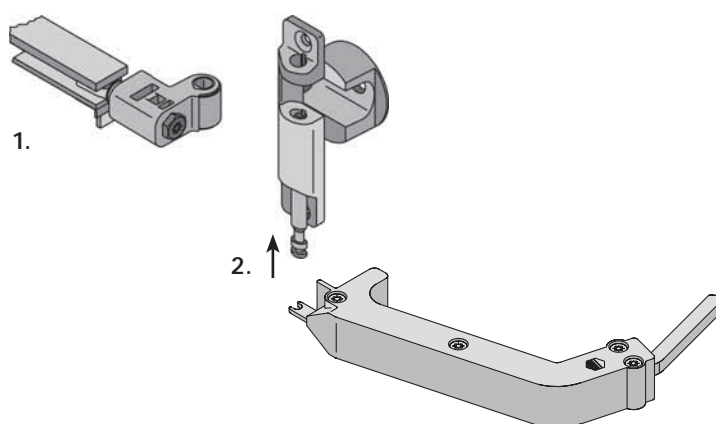


Attenzione:
L'inosservanza potrebbe causare la caduta dell'anta!

Aggancio dell'anta sul telaio – esecuzione ad incasso

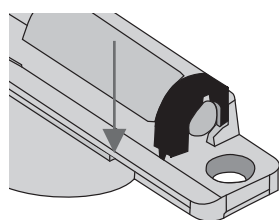
Inserire l'anta con un angolo d'inclinazione di 90° nella cerniera angolare.

1. Inserire la bandella nel supporto forbice e chiudere l'anta (non serrarla).
2. Inserire il perno del supporto forbice fintanto da riuscire ad inserire il blocco di sicurezza (vedi dis.)!



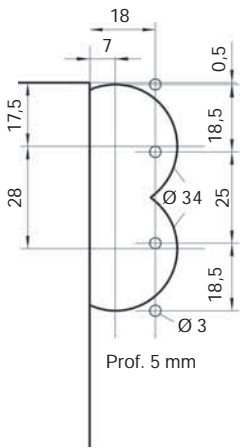
Attenzione:
L'inosservanza potrebbe causare la caduta dell'anta!

3. Inserire il blocco di sicurezza (vedi dis.).

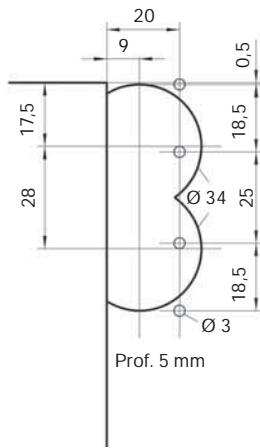


Montaggio componenti A-R sul telaio

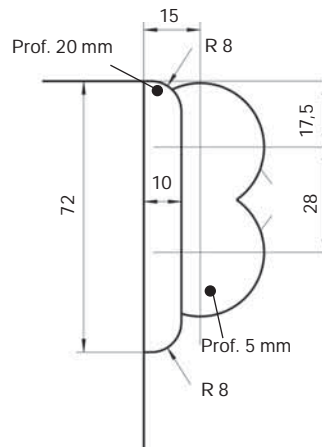
Schema fori per supporto forbice a doppia tazza



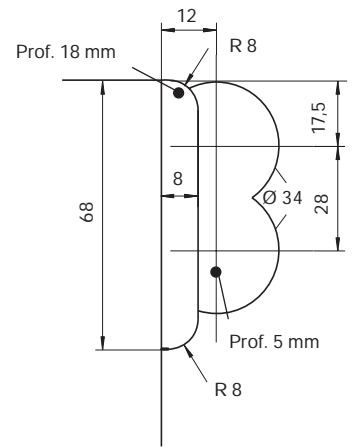
A12/AB18



A12/AB20

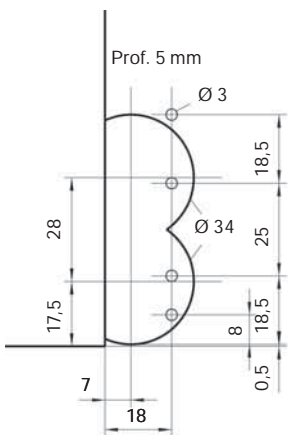


A4/AB18

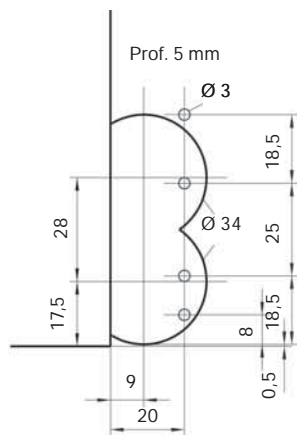


A4/AB15

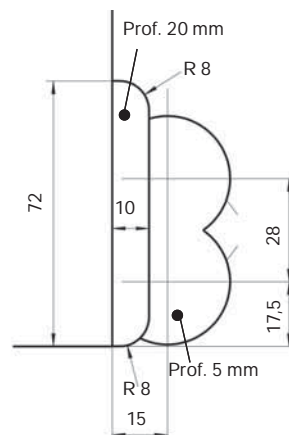
Schema fori per cerniera angolare a doppia tazza – Finestra



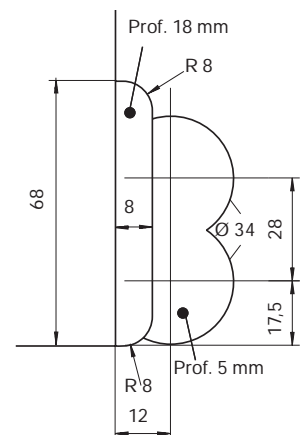
A12/AB18



A12/AB20

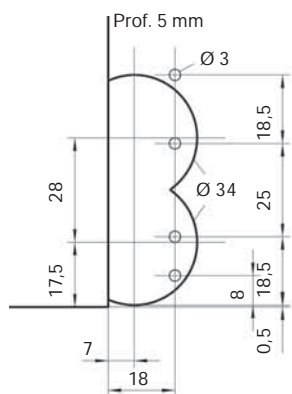


A4/AB18

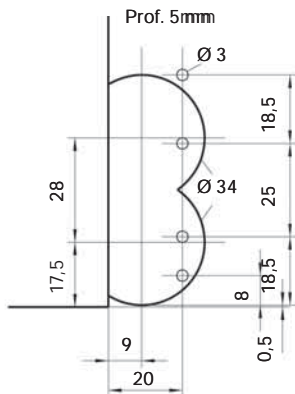


A4/AB15

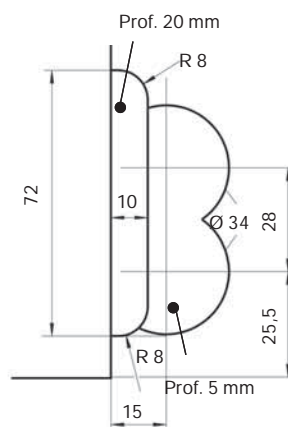
Schema fori per cerniera angolare a doppia tazza – Portafinestra con soglia Transit



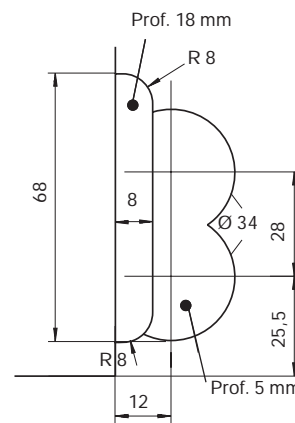
A12/AB18



A12/AB20

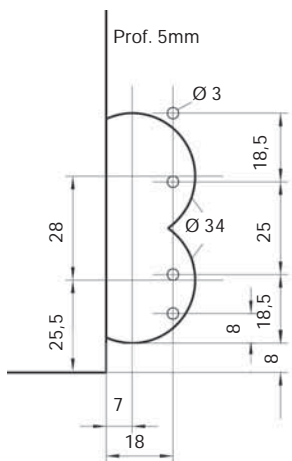


A4/AB18*

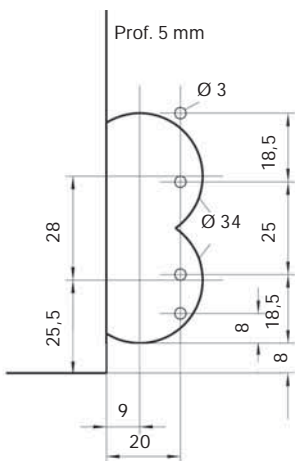


A4/AB15*

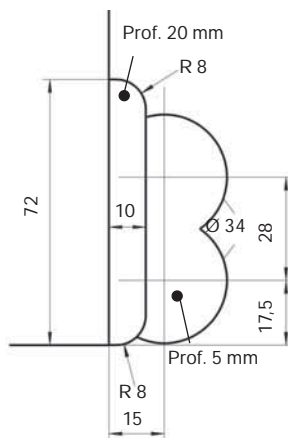
Schema fori per cerniera angolare a doppia tazza – Portafinestra senza soglia Transit



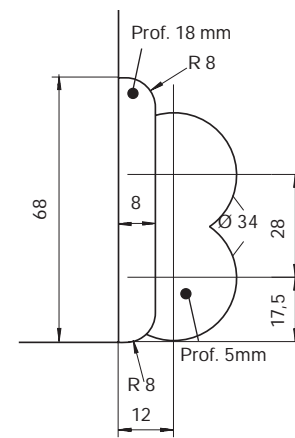
A12/AB18*



A12/AB20*



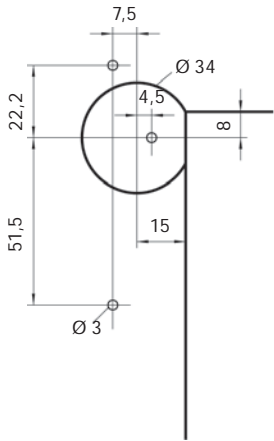
A4/AB18



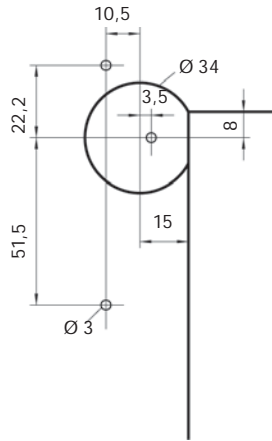
A4/AB15

* Spessorare la dima di 8 mm.

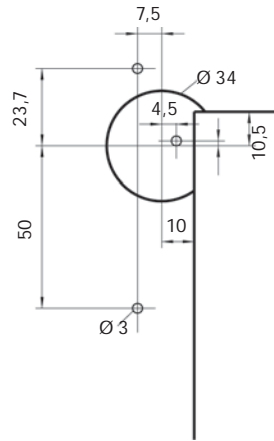
Schema fori per supporto forcice ad incasso
Profondità fresata 20 mm



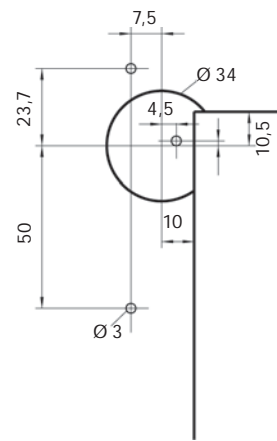
A4/AB15



A4/AB18

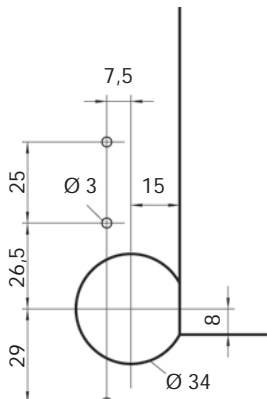


A12/AB18

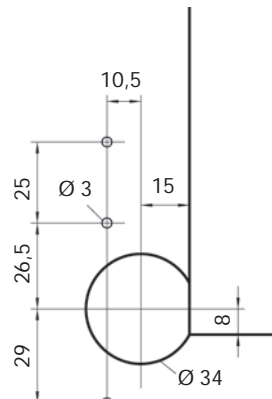


A12/AB20

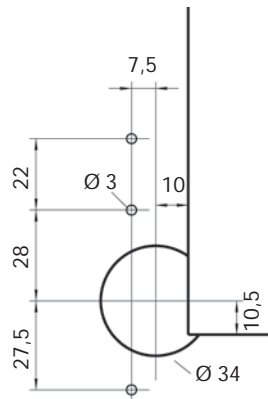
Schema fori per cerniera angolare ad incasso - Finestra
Profondità fresata 20 mm



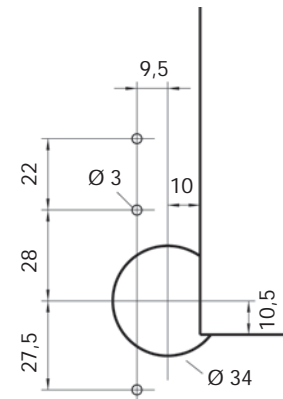
A4/AB15



A4/AB18

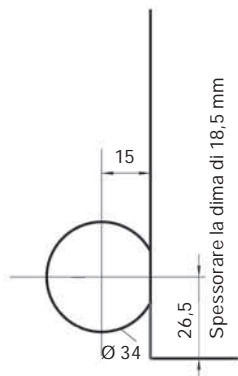


A12/AB18

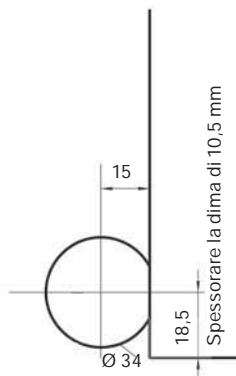


A12/AB20

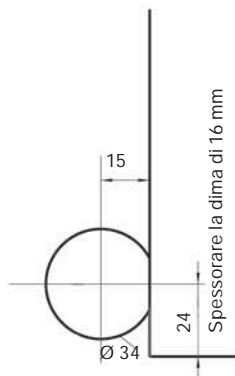
Schema fori per cerniera angolare ad incasso - Portafinestra
Profondità fresata 20 mm



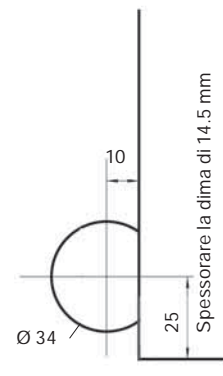
A4/AB15 e AB18
sotto A12



A4/AB15 e AB18
sotto A4



A4/AB15 e AB18
sotto A4 e AB11



A12/AB18 e AB20
sotto A12 o A4