




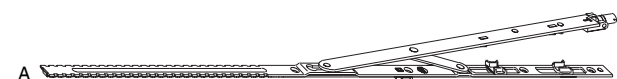

10.4.11 Scontro per forbice supplementare A12 battuta liscia/18




			No	€ (/oo = 100 pz.)
argento	Scontro per forbice ribalta battuta liscia/18	100	A 55277	
	Scontro per forbice supplementare battuta liscia utilizzabile destro e sinistro	100	B 52794	
Tricoat	Scontro per forbice ribalta battuta liscia/18	100	204970	


5.1.1 Forbice ad incasso

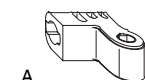
					L		No	€ (/oo = 100 pz.)
argento	gr. 00 ¹	0	400 - 430	280 - 310	255	10	55150	
	gr. 0	0	431 - 600	311 - 500	475	10	55155	
	gr. 1	0	601 - 800	0 - 0	670	10	55156	
	gr. 2	1	801 - 1050	0 - 0	920	10	A 55157	
	gr. 3	1	1051 - 1300	0 - 0	1160	10	55289	
Tricoat	gr. 4 ¹	1	1301 - 1400	0 - 0	1410	10	55151	
	gr. 00	0	400 - 430	280 - 310	255	10	204547	
	gr. 0	0	431 - 600	311 - 500	475	10	204548	
	gr. 1	0	601 - 800	0 - 0	670	10	203702	
	gr. 2	1	801 - 1050	0 - 0	920	10	204549	
	gr. 3	1	1051 - 1300	0 - 0	1160	10	204550	
	gr. 4 ¹	1	1301 - 1400	0 - 0	1410	10	204551	



¹ Con LBB oltre 1400 mm utilizzare gr. 3 con forbice supplementare


5.1.6 Forbice ad incasso per finestra a trapezio

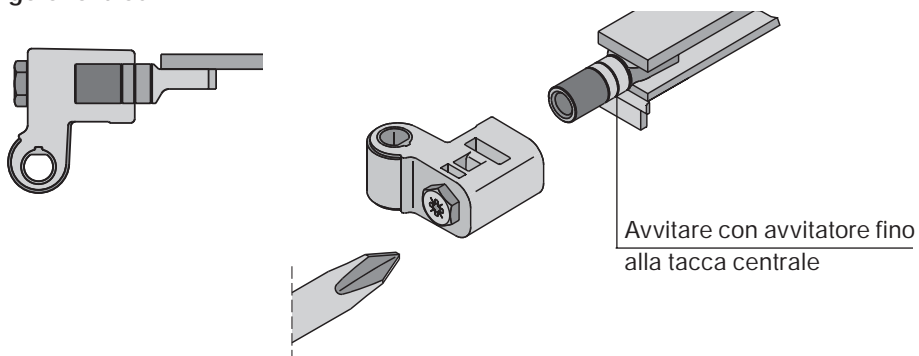
				L		No	€ (/oo = 100 pz.)
argento	gr. 0	0	430 - 630 ¹	475	10	55152	
	gr. 1	0	601 - 800 ¹	670	10	A 55376	
	gr. 2	1	801 - 1050 ¹	920	10	55377	
	gr. 3	1	1051 - 1300 ¹	1160	10	55378	
Tricoat	gr. 0	0	430 - 630 ¹	475	10	205157*	
	gr. 1	0	500 - 800 ¹	670	10	205158*	
	gr. 2	1	801 - 1050 ¹	920	10	205159*	
	gr. 3	1	1051 - 1300 ¹	1160	10	205160*	

¹ Larghezza del lato inclinato

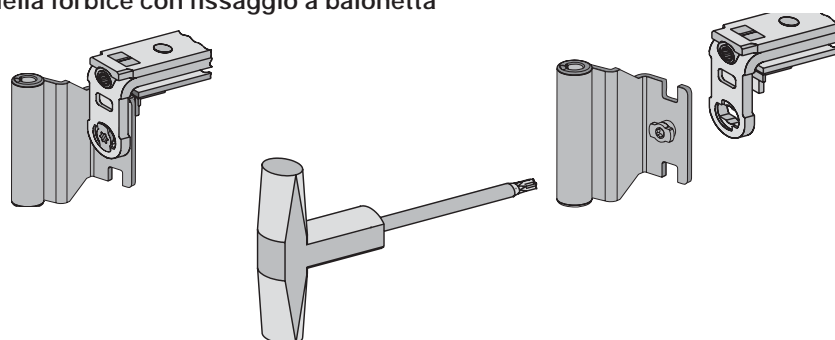

7.2.2 Angolo forbice ad incasso

				No	€ (/oo = 100 pz.)
argento	AB20	130	50	54718	
	AB18	130	50	52388	
	AB15	130	50	A 55416	
Tricoat	AB20	130	50	204611	
	AB18	130	50	201488	
	AB15	130	50	202512	

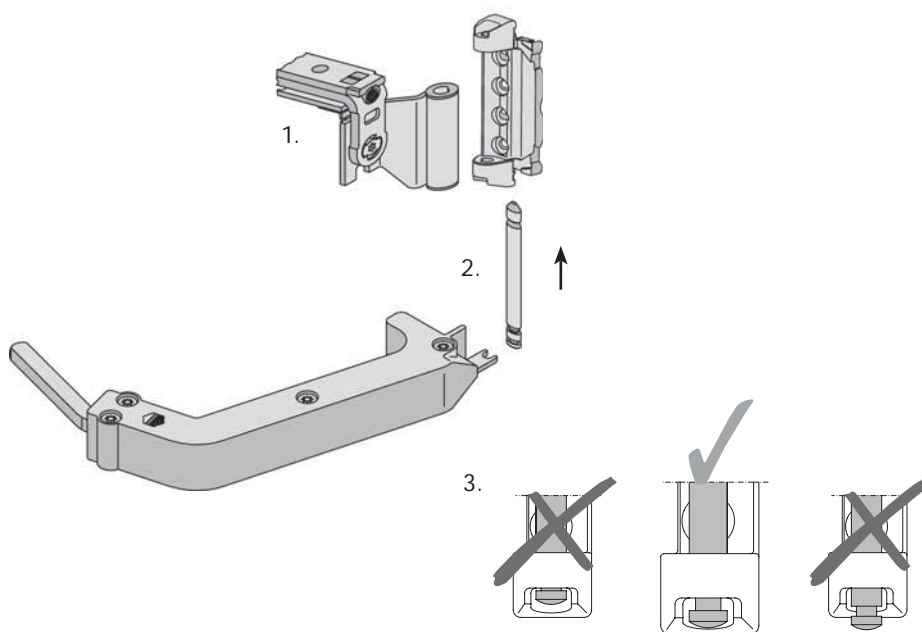
Dis. 2
Angolo forbice



Dis. 3
Bandella forbice con fissaggio a baionetta



Il fissaggio a baionetta deve essere girato di 90°!



Attenzione:
L'inosservanza potrebbe causare la caduta dell'anta!