



**N° VERIFICATION : S-P-05736**

# ENVIRONMENTAL PRODUCT DECLARATION

In accordance with ISO 14025 and EN 15804 for:  
**12.5mm Plasterboard Knauf GKB® Advanced**

Knauf GKB® Advanced

> **Programme:**

The International EPD® System  
[www.environdec.com](http://www.environdec.com)

> **Programme operator:**

EPD International AB

> **EPD registration number:**

S-P-05736

> **Publication date:**

2022/03/31

> **Valid until:**

2027/03/30

> **Manufacturer:**

Knauf di Knauf S.r.l. S.a.s. - Via Livornese, 20  
56040 Castellina Marittima (PI), Italy



# 1. GENERAL INFORMATION

Manufacturer: Knauf di Knauf S.r.l. S.a.s.

Programme used: The International EPD® System.

For more information see [www.environdec.com](http://www.environdec.com)

EPD registration number/declaration number: S-P-05736

Product / product family name and manufacturer represented: GKB® Advanced plasterboard, manufactured by Knauf di Knauf S.r.l. S.a.s.

Product description and use: GKB® Advanced plasterboard is made up of a gypsum core (calcium sulphate dihydrate) with additive and a paper liner. GKB® Advanced plasterboard is designed for use in the residential sector and for building in general for internal use.

Declaration issued: 2022/03/30

Valid until: 2027/03/30

Owner of the declaration: Knauf di Knauf S.r.l. S.a.s. - Via Livornese 20, 56040 Castellina Marittima (PI), Italy. Tel. 050 69211 - Fax 050 692301, [knauf@knauf.it](mailto:knauf@knauf.it).

EPD prepared by: Ergo S.r.l, [www.ergosrl.net](http://www.ergosrl.net)

Scope: The LCA is based on 2020 production data for Castellina Marittima manufacturing site in Italy for GKB® Advanced 12.5 mm. This EPD covers information modules A1 to C4 (cradle to gate with module C1-C4, module D and optional modules) as defined in EN 15804:2012 +A2:2019 for GKB® Advanced sold and used in Italy. The use stage (B1-B7) was not considered in this study. Functional unit/declared unit: The declared unit (DU) is 1 m<sup>2</sup> of gypsum-based plasterboard with a weight of 7.5 kg/m<sup>2</sup>.

<b>CEN standard EN 15804 served as the core PCR<sup>a</sup></b>	
<b>PCR:</b>	PCR 2019:14 Construction products and construction services, Version 1.11.
<b>Product group classification:</b>	The UN CPC code of the product is 314 Boards and panels.
<b>PCR review was conducted by:</b>	The Technical Committee of the International EPD® System. Chair: Claudia A. Peña Email: <a href="mailto:info@environdec.com">info@environdec.com</a>
<b>Independent verification of the declaration and data, according to ISO 14025:</b>	<input type="checkbox"/> EPD process certification <input checked="" type="checkbox"/> EPD verification
<b>Third party verifier:</b>	RINA Services S.p.A. Via Corsica 12, Genova - Italy Tel +39 010 5385306, <a href="http://www.rina.org">www.rina.org</a> ACCREDIA Registration number: 001H REV. 17
<b>Accredited or approved by:</b>	The International EPD® System

<sup>a</sup>Product Category Rules

According to EN 15804, EPDs of construction products may not be comparable if they do not comply with this standard. It should be noted that EPDs within the same product category from different programs may not be comparable.

## 2. ABOUT THE COMPANY

Knauf is one of the world’s leading manufacturers of modern insulation materials, dry lining systems, plasters and accessories, thermal insulation composite systems, paints, floor screed, floor systems, and construction equipment and tools. With 150 production facilities and sales organizations in over 86 countries, 27,500 employees worldwide, and sales of 6.5 billion Euro (in 2016), the Knauf Group is without doubt one of the big players on the market - in Europe, the USA, South America, Russia, Asia, Africa, and Australia.

The company's headquarter in Italy is in Castellina Marittima (Pisa). Currently, the Castellina Marittima plant has a global area of 90,000 square meters, covers an area of 30,000 square meters and owns more than 100 hectares of quarries. The products manufactured in Knauf plant in Castellina Marittima are plasterboard, steel profiles required for the implementation of the plasterboards, ceilings, stucco and impregnators.

## 3. PRODUCT INFORMATION

### 3.1 Product description

Knauf GKB® Advanced plasterboard is a standard gypsum board ultralight consisting of an aerated gypsum core encased in and firmly bonded to strong paper liners. The heart of GKB® Advanced is Li-Tek, an innovative technology based on the upgrade of an important chemical-physical principle: the ability to control and direct the crystalline structure of the material during the production phases. The control of the distribution and dimensions of the internal porosities, which is formed during the growth process of the crystalline structure of the gypsum, allows to create a new molecular framework, lighter for mass reduction and more resistant to mechanical and thermal stress hygrometric thanks to a substantial modification of the dynamics of mechanical deformation and diffusion of heat and humidity. GKB® Advanced plasterboards are used in all areas of interior construction especially for partition walls, wall lining systems on metal or direct-tackle structure and ceilings. GKB® Advanced plasterboard is available in size 12.5 mm.

### 3.2 Technical data

Technical data referred to Knauf GKB® Advanced plasterboard are given in Table 1.

Table 1 - Technical information.

<b>Product identification</b>	DIN 18180 GKB Advanced UNI EN 520 A
<b>Nominal density</b>	The assumed density is $\geq 600 \text{ kg/m}^3$
<b>Thermal conductivity</b>	0.19 W/mk
<b>Class of reaction to fire performance (according to EN 13501:1)</b>	Building material class: A2 Burning droplets: s1 Smoke gas development: d0

### 3.3 Delivery Status

The EPD refers to 12.5 mm thick Knauf GKB® Advanced plasterboard.

### 3.4 Base materials / Ancillary materials

The average composition of gypsum-based plaster, including the packaging materials, is reported in Table 2:

Table 2 - Content declaration of plasterboard and its packaging.

Product components	Weight %	Post-consumer material, weight %	Renewable material, weight %
Stucco	96.28	0	0
Cardboard	2.89	2.89	2.89
Additives <sup>1</sup>	0.79	0	0
Packaging materials	Weight %	Post-consumer material, weight %	Renewable material, weight %
Paper label	0.05	0	0.05
Polyethylene film	2.71	0	0
Wooden bearers	97.24	0	97.24

<sup>1</sup>Including starch, glass fibers and foaming agent, additive for core cohesion

Knauf GKB® Advanced plasterboard does not contain SVHC (Substances of Very High Concern). No additives used are classed as substances of concern; substances are not listed specifically to protect proprietary information.

### 3.5 Packaging

Plasterboards Knauf GKB® Advanced are piled up on bearers and are protected against damage by strapping tape (polyethylene). Packing materials are externally recovered/disposed of.

### 3.6 Recycled material

Board liner for the covering of gypsum core is produced from 100% recycled waste paper, which is certified by FSC and PEFC and is supplied by truck from the German and Spanish manufacturing sites. The GKB® Advanced manufacturing process uses a part of recovered gypsum derived from production wastes and dust from the filtration plants.

### 3.7 Re-use phase

Once plasterboards Knauf GKB® Advanced are installed, they are not suited for re-use in an unchanged way. Prior to collection, plasterboards Knauf GKB® Advanced should be separated from other used building materials.

### 3.8 Disposal

Knauf GKB® Advanced plasterboards have to be disposed of in compliance with the following waste codes of the European Waste Catalogue /EWC/:17 08 02 gypsum-based construction materials.

### 3.9 Further information

Further information can be found through the enquiry desk: +39 050 69211

[knauf@knauf.it](mailto:knauf@knauf.it) | [www.knauf.it](http://www.knauf.it)

### 3.10 Manufacture

Knauf GKB® Advanced plasterboard is manufactured using a continuous production process, showed in the Figure 1 below:

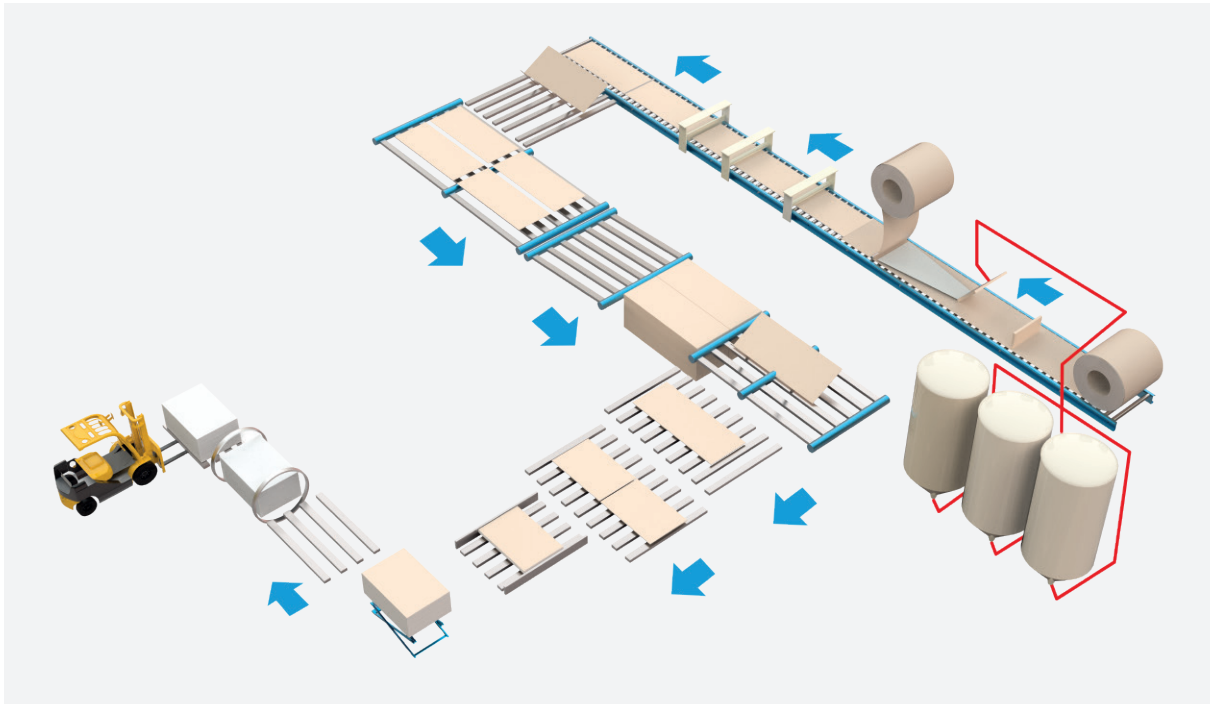


Figure 1 - Gypsum board manufacturing process

Raw materials are homogeneously mixed to form a gypsum slurry that is spread via hose outlets onto a paper liner on a moving belt conveyor. A second paper line is fed onto the production line from above to form the plasterboard. The plasterboard continues along the production line where it is finished, dried and cut to size.

### 3.11 Environment and Health during manufacture

At Knauf, Health and Safety is a core value. The Company's aim is always to be injury-free. A target of zero accidents at work for employees, visitors and contractors is set by the business.

In all aspects of the Company's activities, the Health and Safety rules and relevant regulations must be complied with. In addition, there are a number of definitive Company Safety Procedures and together these determine the minimum standards expected by the Company. In order to achieve this, close co-operation with representatives of the relevant enforcement agencies is ensured.

To ensure that the Company's objectives are achieved, documented safety management systems are employed at site and within the central functions. These include a systematic identification of hazards, assessment of the risks and the development of safe systems of work to eliminate or reduce any risks to an acceptable level. Audits and Inspections are used to monitor standards of safety management, adherence to the law and Company procedures. Knauf plants are managed through ISO 14001, ISO 9001 and BS OHSAS 18001 certified systems.

## 4. LCA INFORMATION

Figure 2 shows a flow diagram of the system under study. The system boundary covers A1 - A3 product stages referred as 'Raw material supply', 'Transport' and 'Manufacturing'.

In addition to the manufacturing phase (modules A1-A3), this EPD contains the transport from the manufacturing to the building site (A4) and the installation into the building site (A5) as well as the End-of-life stage (de-construction and demolition as C1; transport to waste processing as C2; waste processing for reuse, recovery and/or recycling as C3; disposal as C4; benefits and loads beyond the system boundary, as module D). Accordingly, the EPD is a cradle-to-gate declaration with module C1-C4, module D and optional modules. The system boundaries in tabular form for all modules are shown in the Table 3 below.

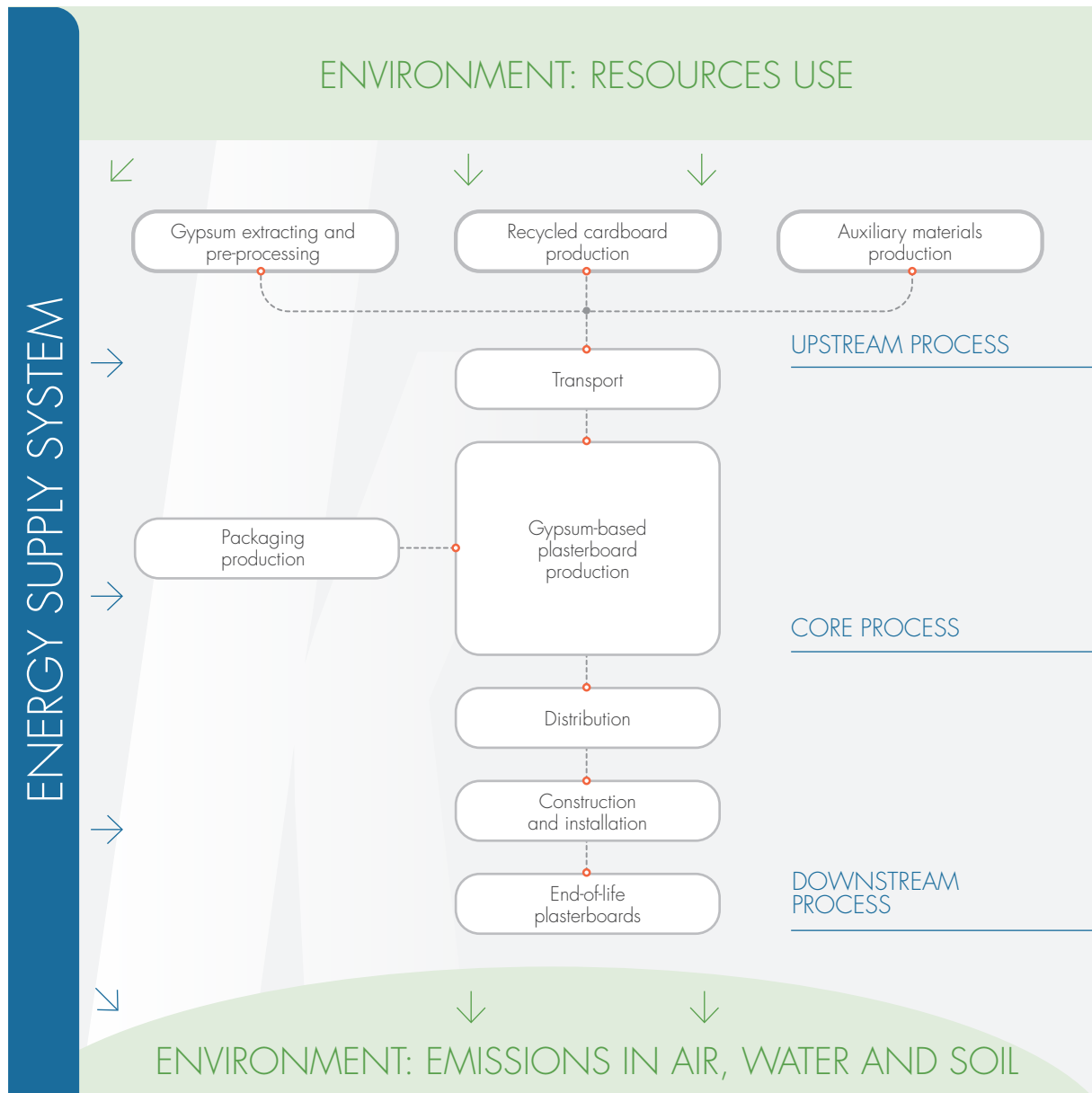


Figure 2 - Flow diagram of system boundary under assessment.

Table 3 - System boundaries chosen for the LCA (X-module included in LCA. MND - module not included).

Product stage			Construction process stage		Use stage							End of life stage				Benefits and loads beyond the system boundaries
Raw material supply	Transport	Manufacturing	Transport from the gate to the site	Construction installation	Use	Maintenance	Repair	Replacement	Refurbishment	Operational energy use	Operational water use	De-construction demo	Transport	Waste processing	Disposal	Reuse- Recovery- Recycling- potential
A1	A2	A3	A4	A5	B1	B2	B3	B4	B5	B6	B7	C1	C2	C3	C4	D
X	X	X	X	X	MND	MND	MND	MND	MND	MND	MND	X	X	X	X	X

## 5. LCA CALCULATION RULES

LCA calculation rules are reported in Table 4.

Table 4 - LCA calculation rules.

<b>5.1</b>	<b>Functional unit/ declared unit</b>	The declared unit is 1 m <sup>2</sup> of gypsum-based plasterboard with a weight of 7.5 kg/m <sup>2</sup>
<b>5.2</b>	<b>System boundaries</b>	Cradle to gate with module C1-C4, module D and optional modules (A4, A5)
<b>5.3</b>	<b>Estimates and assumptions</b>	<p>The use stage (module B1-B7) was assumed have no impacts. The GKB<sup>®</sup> Advanced product has a reference service life of 50 years. This assumes that the product will last in situ with no requirements for maintenance, repair, replacement or refurbishment throughout this period. For the production of additives and packaging materials (and their disposal), generic data have been used, since their mass flow in relation to the declared unit is limited. Furthermore, these materials are common to the different plasterboard systems (and gypsum sources) under assessment. Since there is no waste processing at the end of life, module C3 is not applicable. The declared plasterboard is typically disposed of as construction waste which is declared in module C4, therefore module D is not applicable. Module D is only applied to main recovered materials from the life cycle stages A to C.</p>
<b>5.4</b>	<b>Cut-off rules</b>	All major raw materials and all the essential energy is included. General cut-off criteria are given in standard EN 15804:2012+A2:2019 Clause 6.3.6 In compliance with these criteria, the infrastructure of the manufacturing site and personnel related activities (travel, office operations and supplies) are excluded from the study.



<p><b>5.5</b></p>	<p><b>Background Data</b></p>	<p>All primary product data was provided by Knauf S.r.l. S.a.s. - Castellina Marittima plant. All secondary data was retrieved using SIMAPRO 9 software, with Ecoinvent 3.6 database.</p>
<p><b>5.6</b></p>	<p><b>Data quality</b></p>	<p>Primary data refer to 2020 and have been collected at Knauf S.r.l. S.a.s. plant located in Castellina Marittima (IT), whereas selected generic data have been retrieved from Ecoinvent 3.6 database and using the most updated datasets and - as far as possible- those representatives for at least 5 years into the future. Moreover, as required by the General Programme Instructions, the environmental impacts associated to proxy data do not exceed 10% of the overall environmental impact from the product system. The energy mix of Knauf di Knauf S.r.l. S.a.s. Castellina Marittima plant is characterized by 61,5% of electricity self-produced by cogeneration and 38.5% by electricity purchased from an external energy company. The energy-related data from the energy supplier refer to the supplier energy mix, whereas for the production of raw materials a European energy mix has been accounted for.</p>
<p><b>5.7</b></p>	<p><b>Period under review</b></p>	<p>The data is representative of the manufacturing processes of 2020.</p>
<p><b>5.8</b></p>	<p><b>Allocations</b></p>	<p>Allocations were avoided in the calculation model.</p>
<p><b>5.9</b></p>	<p><b>Comparability</b></p>	<p>A comparison or an evaluation of EPD data is only possible where EN 15804 has been followed, the same building context and product-specific characteristics of performance are taken into account, and the same stages have been included in the system boundary. According to EN 15804, EPD of construction products may not be comparable if they do not comply with this standard. According to ISO 21930, EPD might not be comparable if they are from different programmes.</p>

### Description of system boundaries

This EPD evaluates the environmental impacts of 1 m<sup>2</sup> of gypsum-based plasterboard from cradle to gate with module C1-C4, module D and optional modules. Within the Life Cycle Assessment of the declared board, the following processes are considered:

## Product stage, A1-A3

---

### Description of the stage

The product stage of the plasterboard products is subdivided into three modules; A1, A2 and A3 respectively "raw material supply", "transport" and "manufacturing".

#### A1, raw material supply

This includes raw material extraction and processing and energy production. The declared Knauf gypsum board consists of a gypsum core, which also contains additives for easier processing and/or a fine adjustment of the respective properties of the individual board. The natural gypsum is mainly extracted from open-cast mining in close vicinity to the manufacturing site.

Natural gypsum is calcinated to stucco prior to the mixing with other components.

Board liner for the covering of gypsum core is produced from recycled waste paper.

#### A2, transport to the manufacturer

Natural gypsum is extracted from mines close to the manufacturing sites. Accordingly, transport distances are short and trucks can be used. Further raw materials are supplied by truck from manufacturers within Italy or from neighbouring countries. Only some exceptional additives are delivered from overseas via container ship and truck to the manufacturing plant.

#### A3, manufacturing

The module includes the manufacture of product. Stucco and additives are suspended in water and spread on a continuous sheet of board liner (visible face, lower layer). Beforehand, the board liner is cut at the sides for edge shaping. The slurry is covered with a second sheet of board liner (back surface) in the forming station and the edges of the visible face board liner are flipped upwards. On the subsequent board liner, the gypsum sets continuously and the boards are dried in a multi-level drier to the permitted residual moisture level. Drying is followed by the cutting of the boards to the desired lengths. Finally, gypsum boards are piled up on bearers.

All other packaging materials are externally recycled/disposed of (external recycling is beyond the applied system boundaries). When recycled materials are being used, such as post-consumer recycled cardboard, burdens associated with the collection, processing and transport of these materials were included in the assessment.

## Construction process stage, A4-A5

### Description of the stage

The construction process is divided into 2 modules: A4, transport to the building site and A5, installation into the building.

### A4, transport to the building site

The Table 5 below quantifies the parameters for transporting the product from production gate to the building site. The distance quoted is a weighted average, calculated using company information and the quantity of product transported. For the distribution of the finished products, an average scenario with EURO 4, EURO 5 and EURO 6 articulated trucks has been accounted for, based on the sale figures in Italy in the reference year. Specific data was not available for capacity utilisation or fuel consumption, therefore generic European values from Ecoinvent database have been assumed.

Table 5 - Parameters for transporting the product from production gate to the building site.

Parameter	Value (expressed per functional/declared unit)
Type of vehicle	Truck 16-32 tons. EURO4, EURO5, EURO 6 Boat, freight ship
Distance to central warehouse	358 km weighted average by truck to all markets 41 km weighted average by boat to all markets
Distance to construction site	15 km
Fuel/energy consumption	0.04 l diesel fuel per tkm (truck) 0.0002 l diesel fuel per tkm (boat)
Capacity utilization	70%
Bulk density of transported products	600 kg/m <sup>3</sup>

### A5, installation into the building

The plasterboard is considered installed when it is attached in its designated place in the building. The accompanying Table 6 quantifies the parameters for installing the product at the building site. All installation materials and their waste processing and packaging waste of plasterboard are included.

Table 6 - Parameters for installing the product at the building site.

Parameter	Value (expressed per functional/declared unit)
<b>Ancillary materials for installation (specified by materials)</b>	Jointing compound: 0.350 kg Jointing tape: 0.00065 kg (1.5m) Screw: 0.013 kg
<b>Water use</b>	0.00165 m <sup>3</sup>
<b>Other resource use</b>	None
<b>Quantitative description of energy type (regional mix) and consumption during the installation process</b>	None required
<b>Wastage of materials on the building site before waste processing, generated by the product's installation (specified by type)</b>	Knauf GKB® Advanced 12.5mm: 0.325 kg Jointing compound: 0.0175 kg  Wooden bearers: 41.40 g (waste from packaging) Polyethylene film: 1.15 g (waste from packaging) Paper label: 0.02 g (waste from packaging)
<b>Output materials (specified by type) as results of waste processing at the building site e.g. of collection for recycling, for energy recovery, disposal (specified by route)</b>	Knauf GKB® Advanced 12.5mm: 0.325 kg to landfill Jointing compound: 0.0175 kg to landfill Wooden bearers: 41.40 g to energy and material recovery Polyethylene film: 1.15 g to energy and material recovery Paper label: 0.02 g/m <sup>2</sup> to energy and material recovery

## Use stage (excluding potential savings), B1-B7

### Description of the stage

The use stage is divided into the following:

- B1, use or application of the installed product;
- B2, maintenance;
- B3, repair;
- B4, replacement;
- B5, refurbishment;
- B6, operational energy use;
- B7, operational water use.

### Description of scenarios and additional technical information

The product has a reference service life of 50 years. This assumes that the product will last in situ with no requirements for maintenance, repair, replacement or refurbishment throughout this period. Knauf GKB® Advanced plasterboard is a passive building product; therefore, it has no impact at this stage.

## End-of-life stage, C1-C4

### Description of the End-of-life stage

The end-of-life stage includes:

#### C1, de-construction, demolition

Deconstruction includes dismantling or demolition of the product from the construction.

No on-site sorting of the materials occurs.

#### C2, transport to waste processing

Once the product is uninstalled, the construction mixed waste is transported for 40 km to the landfill disposal.

#### C3, waste processing for reuse, recovery and/or recycling

Since there is no waste processing at the end of life, modules C3 is not applicable.

#### C4, disposal

Product residues (e.g., plasterboard scraps, jointing tapes, jointing compound) are considered to be deposited in a landfill.

Table 7 - End-of-life stage.

Parameter	Value (expressed per functional/declared unit)
<b>C1) Collection process specified by type</b>	7.5 kg collected and transported by truck for landfill
<b>C2) Assumption for scenario development (e.g. transportation)</b>	Diesel consumption 0.04L per tkm; 40 km from demolition site to waste handle
<b>C3) Recovery system specified by type</b>	None
<b>C4) Disposal specified by type</b>	100% of waste is landfilled

## Reuse/recovery/recycling potential, D

### Description of the stage

Module D, relating to information on the potential for reuse/recovery/recycling, is assessed considering the benefits of the avoided impact of future extractions and production of raw materials, brought about by the recycling of the main materials from A to C (e.g., steel, paperboard, plastic, wood, construction materials). The processes necessary to make the materials of the product (at the end of life) new raw materials for subsequent life cycles are considered.

Module D for GKB® Advanced plasterboard is not applicable since it is disposed of in landfills.

## 6. LCA RESULTS

In following tables, the environmental impacts per declared unit are reported for the environmental categories recommended by the EPD's General Programme Instruction (version 3.01, September 2019) and those indicated in PCR 2019:14 version 1.11 for Construction Products and construction services. The LCIA results are relative expressions and do not predict impacts on category endpoints, the exceeding of thresholds, safety margins or risks. EN 15804+A2 (adapted) method has been used as the impact model. The numbers reported in the following tables are the outcome of rounding. For this reason, total results could slightly differ from the sum of contributions of the different phases.

## 7. LCA RESULTS INTERPRETATION

The product stage (modules A1-A3) is responsible for the biggest share of the environmental impact for most indicators (from 70% to 99%) except abiotic depletion potential for radioactive waste disposed 40% and non-hazardous waste disposed 0.5%.

The distribution of finished product (transport in module A4) influences the LCA results with a medium percentage of 16%, except for global warming potential-biogenic 0.3%, global warming potential-land use 0.04%, freshwater eutrophication 0.42%, resource use, mineral and metals 0.3%, net use of freshwater 0.83%, non-hazardous waste 0.003%. By contrast, transports in modules A2 and C2 contribute only 9% at maximum.

The installation phase (module A5) has a negligible contribution to the impact categories, less than 5% (except for the global warming potential-biogenic origin where it contributes up to a maximum of 14%).

With regard to total energy consumption, the product stage (modules A1 - A3) has the highest contribution to this indicator, with a maximum percentage of 99%. Energy consumption for drying phase of the plasterboards is the main contributor to this indicator.

The same trend of results is related to the use of fresh water, where A1 - A3 modules are the main responsible of impacts, with a contribution of 97%.

The effect of disposal life cycle stage has little effect (less than 3%) on life cycle impacts, except for non-hazardous waste where the contribution of plasterboard disposal (module C4) to the overall results is 95%.

### ADDITIONAL INFORMATION

#### Greenhouse gas emission from the use of electricity in the manufacturing phase

Electricity used in the manufacturing processes has been accounted for using the electricity mix (21.28% renewables, 11.39% coal, 57.92% natural gas, 0.67% oil, 4.56% nuclear, 4.18% other sources) from energy supplier (for the year 2020):

Greenhouse gas emissions: 0.136 kg CO<sub>2</sub> eq/MJ

Table 8 - LCA results of potential environmental impact referred to the declared unit.

GKB® Advanced 12.5 mm - ENVIRONMENTAL IMPACTS															
Parameters	Product stage	Construction process stage		Use stage							End-of-life stage				D Reuse, recovery, recycling
	A1/A2/A3	A4 Transport	A5 Installation	B1 Use	B2 Maintenance	B3 Repair	B4 Replacement	B5 Refurbishment	B6 Operation energy use	B7 Operational water use	C1 Deconstruction/ demolition	C2 Transport	C3 Waste processing	C4 Disposal	
<b>Global Warming Potential (GWP) TOT - kg CO<sub>2</sub> eq./DU</b> Global Warming Potential = Potential change in the earth's climate due to accumulation of greenhouse gases and subsequent trapping of heat from reflected sunlight that would otherwise have passed out of the earth's atmosphere. Greenhouse gas refers to several different gases including carbon dioxide (CO <sub>2</sub> ), methane (CH <sub>4</sub> ) and nitrous oxide (N <sub>2</sub> O). For global warming potential, these gas emissions are tracked and their potencies reported in terms of equivalent units of CO <sub>2</sub> . The impact category 'Global Warming' covers three sub-categories: fossil, biogenic, land use and land use change.	1.74E+00	4.03E-01	7.87E-02	-	-	-	-	-	-	-	2.31E-02	2.16E-02	0	1.89E-02	1.27E-02
<b>Global Warming Potential (GWP) Fossil - kg CO<sub>2</sub> eq./DU</b> GWP-fossil covers greenhouse gas (GHG) emissions to any media originating from the oxidation and/or reduction of fossil fuels by means of their transformation or degradation (e.g. combustion, digestion, landfilling, etc.).	1.72E+00	4.03E-01	7.73E-02	-	-	-	-	-	-	-	2.31E-02	2.15E-02	0	1.89E-02	1.44E-02
<b>Global Warming Potential (GWP) biogenic - kg CO<sub>2</sub> eq./DU</b> GWP-biogenic covers carbon emissions to air (CO <sub>2</sub> , CO and CH <sub>4</sub> ) originating from the oxidation and/or reduction of aboveground biomass by means of its transformation or degradation (e.g. combustion, digestion, composting, landfilling) and CO <sub>2</sub> uptake from the atmosphere through photosynthesis during biomass growth - i.e. corresponding to the carbon content of products, biofuels or above ground plant residues such as litter and dead wood.	8.36E-03	2.53E-05	1.36E-03	-	-	-	-	-	-	-	1.63E-06	1.34E-06	0	2.61E-06	-1.89E-03
<b>Global Warming Potential (GWP) Land use - kg CO<sub>2</sub> eq./DU</b> GWP-land use and land use change accounts for carbon uptakes and emissions (CO <sub>2</sub> , CO and CH <sub>4</sub> ) originating from carbon stock changes caused by land use change and land use. This sub-category includes biogenic carbon exchanges from deforestation, road construction or other soil activities (including soil carbon emissions).	8.64E-03	3.20E-06	2.78E-05	-	-	-	-	-	-	-	3.35E-07	1.70E-07	0	4.62E-07	2.50E-04
<b>Ozone Depletion Potential (ODP) - kg CFC11 eq./DU</b> Ozone Depletion Potential = Destruction of the stratospheric ozone layer which shields the earth from ultraviolet radiation harmful to life. This destruction of ozone is caused by the breakdown of certain chlorine and/or bromine containing compounds (chlorofluorocarbons or halons), which break down when they reach the stratosphere and then catalytically destroy ozone molecules.	3.18E-07	9.37E-08	9.69E-09	-	-	-	-	-	-	-	5.21E-09	4.98E-09	0	3.95E-09	7.22E-09
<b>Acidification Potential (AP) - kg SO<sub>2</sub> eq./DU</b> Acidification Potential = Acid depositions have negative impacts on natural ecosystems and the man-made environment incl. buildings. The main sources for emissions of acidifying substances are agriculture and fossil fuel combustion used for electricity production, heating and transport.	6.32E-03	1.30E-03	4.67E-04	-	-	-	-	-	-	-	2.50E-04	1.26E-04	0	1.95E-04	1.28E-03
<b>Eutrophication freshwater Potential (EP) - kg PO<sub>4</sub><sup>3-</sup> eq. /DU</b>	1.71E-04	7.38E-07	6.08E-06	-	-	-	-	-	-	-	5.56E-08	3.92E-08	0	2.12E-07	1.80E-05
<b>Eutrophication marine Potential (EP) - kg N eq. /DU</b>	2.20E-03	3.70E-04	1.36E-04	-	-	-	-	-	-	-	1.12E-04	5.10E-05	0	8.47E-05	9.16E-05
<b>Eutrophication terrestrial Potential (EP) - mol N eq. /DU</b> Eutrophication potential = Excessive enrichment of waters and continental surfaces with nutrients and the associated adverse biological effects.	2.28E-02	4.08E-03	1.50E-03	-	-	-	-	-	-	-	1.23E-03	5.60E-04	0	9.29E-04	1.06E-03

Table 8 - LCA results of potential environmental impact referred to the declared unit.

GKB® Advanced 12.5 mm - ENVIRONMENTAL IMPACTS															
Parameters	Product stage	Construction process stage		Use stage							End-of-life stage				D Reuse, recovery, recycling
	A1/A2/A3	A4 Transport	A5 Installation	B1 Use	B2 Maintenance	B3 Repair	B4 Replacement	B5 Refurbishment	B6 Operation energy use	B7 Operational water use	C1 Deconstruction/ demolition	C2 Transport	C3 Waste processing	C4 Disposal	
<b>Photochemical Ozone Creation Potential (POCP) - kg NMVOC /DU</b>	5.48E-03	1.14E-03	4.91E-04	-	-	-	-	-	-	-	3.36E-04	1.44E-04	0	2.59E-04	2.18E-04
	Photochemical ozone creation potential = Chemical reactions brought about by the light energy of the sun. The reaction of nitrogen oxides with hydrocarbons in the presence of sunlight to form ozone is an example of a photochemical reaction.														
<b>Water use Deprivation Potential, m<sup>3</sup> depriv/DU</b>	3.76E-01	-1.27E-03	1.22E-02	-	-	-	-	-	-	-	6.21E-05	-6.69E-05	0	8.66E-05	1.11E-01
	Water use = It is based on the available water remaining per unit of surface in a given watershed relative to the world average, after human and aquatic ecosystem demands have been met.														
<b>Resource use, minerals and metals, kg Sb eq. /DU</b>	7.57E-06	2.37E-08	3.89E-07	-	-	-	-	-	-	-	1.03E-08	1.27E-09	0	7.84E-09	8.38E-07
	Resource use, minerals and metals = Consumption of non-renewable resources, thereby lowering their availability for future generations.														
<b>Resource use, minerals and metals, kg Sb eq. /DU</b>	2.61E+01	5.72E+00	9.59E-01	-	-	-	-	-	-	-	3.20E-01	3.04E-01	0	2.52E-01	5.90E-01
	Resource use, fossils = Consumption of non-renewable resources, thereby lowering their availability for future generations.														



Table 9 - LCA results of use of resources referred to the declared unit.

GKB® Advanced 12.5 mm - RESOURCES USE															
Parameters	Product stage	Construction process stage		Use stage							End-of-life stage				D Reuse, recovery, recycling
	A1/A2/A3	A4 Transport	A5 Installation	B1 Use	B2 Maintenance	B3 Repair	B4 Replacement	B5 Refurbishment	B6 Operation energy use	B7 Operational water use	C1 Deconstruction/ demolition	C2 Transport	C3 Waste processing	C4 Disposal	
Use of renewable primary energy excluding renewable primary energy resources used as raw materials MJ/DU	3.19E+00	8.00E-03	3.81E-02	-	-	-	-	-	-	-	4.86E-04	4.25E-04	0	9.53E-04	5.17E+00
Use of renewable primary energy used as raw materials MJ/DU	2.20E-04	2.17E-06	8.95E-06	-	-	-	-	-	-	-	1.27E-07	1.15E-07	0	4.30E-07	4.27E-03
Total use of renewable primary energy resources (primary energy and primary energy resources used as raw materials) MJ/DU	3.19E-00	8.00E-03	3.81E-02	-	-	-	-	-	-	-	4.87E-04	4.25E-04	0	9.53E-04	5.18E+00
Use of non-renewable primary energy excluding non-renewable primary energy resources used as raw materials - MJ/DU	2.61E+01	5.72E+00	9.59E-01	-	-	-	-	-	-	-	3.20E-01	3.04E-01	0	2.52E-01	5.90E-01
Use of non-renewable primary energy used as raw materials MJ/DU	0	0	0	-	-	-	-	-	-	-	0	0	0	0	0
Total use of non-renewable primary energy resources (primary energy and primary energy resources used as raw materials) - MJ/DU	2.61E+01	5.72E+00	9.59E-01	-	-	-	-	-	-	-	3.20E-01	3.04E-01	0	2.52E-01	5.90E-01
Use of secondary material kg/DU	3.04E-01	0	0	-	-	-	-	-	-	-	0	0	0	0	0
Use of renewable secondary fuels- MJ/DU	0	0	0	-	-	-	-	-	-	-	0	0	0	0	0
Use of non-renewable secondary fuels - MJ/DU	0	0	0	-	-	-	-	-	-	-	0	0	0	0	0
Use of net fresh water m³/DU	1.28E-02	1.09E-04	3.74E-04	-	-	-	-	-	-	-	7.57E-06	5.79E-06	0	5.91E-06	2.75E-03

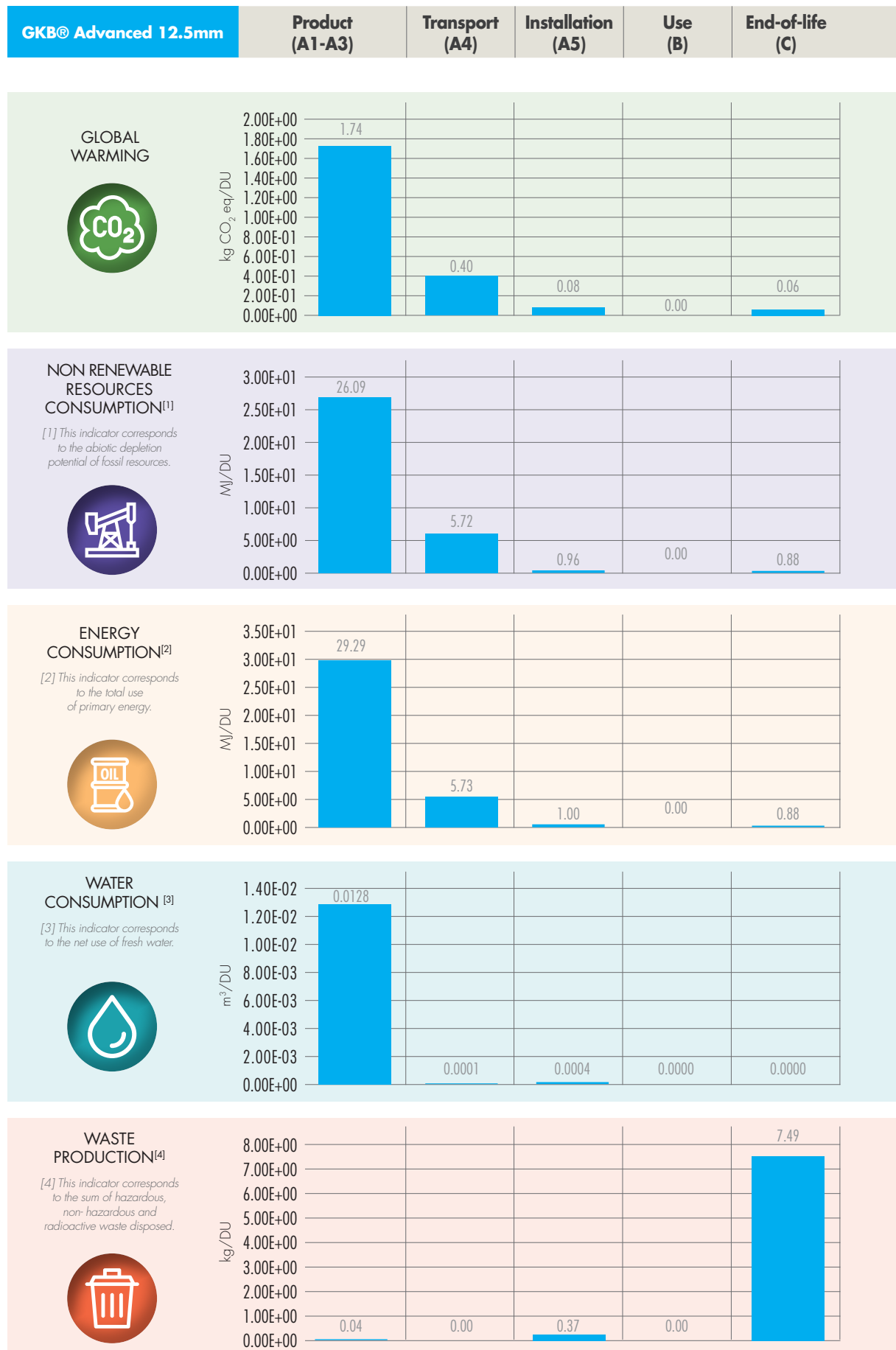
Table 10 - LCA results of waste categories referred to the declared unit.

GKB® Advanced 12.5 mm - WASTE CATEGORIES															
Parameters	Product stage	Construction process stage		Use stage							End-of-life stage				D Reuse, recovery, recycling
	A1/A2/A3	A4 Transport	A5 Installation	B1 Use	B2 Maintenance	B3 Repair	B4 Replacement	B5 Refurbishment	B6 Operation energy use	B7 Operational water use	C1 Deconstruction/demolition	C2 Transport	C3 Waste processing	C4 Disposal	
Hazardous waste disposed kg/DU	1.03E-04	1.51E-05	1.78E-06	-	-	-	-	-	-	-	8.37E-07	8.05E-07	0	6.34E-07	2.96E-06
Non-hazardous (excluding inert) waste disposed kg/DU	3.89E-02	2.37E-04	3.67E-01	-	-	-	-	-	-	-	1.91E-05	1.26E-05	0	7.49E+00	2.12E-02
Radioactive waste disposed kg/DU	3.41E-05	4.15E-05	3.94E-06	-	-	-	-	-	-	-	2.30E-06	2.20E-06	0	1.75E-06	5.09E-06

Table 11 - LCA results of output flows referred to the declared unit.

GKB® Advanced 12.5 mm - OUTPUT FLOWS															
Parameters	Product stage	Construction process stage		Use stage							End-of-life stage				D Reuse, recovery, recycling
	A1/A2/A3	A4 Transport	A5 Installation	B1 Use	B2 Maintenance	B3 Repair	B4 Replacement	B5 Refurbishment	B6 Operation energy use	B7 Operational water use	C1 Deconstruction/demolition	C2 Transport	C3 Waste processing	C4 Disposal	
Components for re-use kg/DU	0	0	0	-	-	-	-	-	-	-	0	0	0	0	0
Materials for recycling kg/DU	1.54E-01	0	2.75E-02	-	-	-	-	-	-	-	0	0	0	0	0
Materials for energy recovery kg/DU	1.25E-03	0	1.50E-02	-	-	-	-	-	-	-	0	0	0	0	0
Exported energy MJ/DU	0	0	0	-	-	-	-	-	-	-	0	0	0	0	0

The images below demonstrate the impact of each life cycle stage on 5 key parameters, producing a clear view of how each stage contributes to the overall environmental impacts of 12.5 mm Knauf GKB® Advanced plasterboard.



## 8. REFERENCES

### Ecoinvent, 2019

Swiss Centre for Life Cycle Assessment, supplier of Ecoinvent v3.6 database ([www.ecoinvent.ch](http://www.ecoinvent.ch)).

### General principles

EPD International (2019) General Programme Instructions for the International EPD® System. Version 3.01.

### LCA study

Life Cycle Assessment delle lastre in cartongesso GKB® Advanced, prodotta da Knauf di Knauf S.r.l. S.a.s. Castellina Marittima (PI), Italia (30/07/2021).

### PCR

PCR 2019:14 version 1.11 for Construction Products and construction services.

IVL Swedish Environmental Research Institute, Swedish Environmental Protection Agency, SP Trä. Swedish Wood Preservation Institute, Swedisol, SCDA. Svenskt Limträ AB. SSAB (2019).

### Standards:

EN 15804:2019+A2 "Sustainability of construction works - Environmental product declarations - Core rules for the product category of construction products"

ISO 14025:2011-10. Environmental labels and declarations - Type III environmental declarations - Principles and procedures.

BS:OHSAS 18001:2007- ISO 45001:2018. Occupational Health and Safety Management

ISO 14001:2015. Environmental management systems - Requirements with guidance for use

ISO 9001:2015. Quality management systems - Requirements

ISO 14040:2006. Environmental management - Life cycle assessment - Principles and framework

ISO 14044:2018. Environmental management - Life cycle assessment - Requirements and guidelines



# KNAUF



## Le nostre certificazioni



03/2022