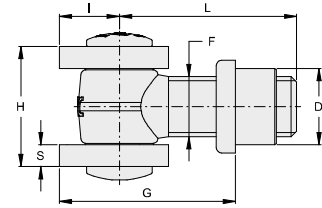


CARDINI CON PERNO ANTIROTAZIONE  
HINGES WITH ANTI-ROTATION PIN

# VC1101

- IT Cardine a saldare
- EN Hinge to weld
- DE Torband verstellbar zum Anshweißen
- FR Gond à souder
- ES Bisagra para soldar



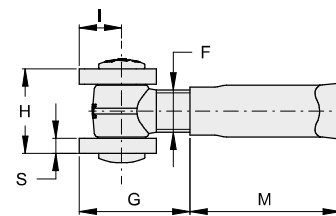
CODE	ARTICLE	F	H	S	I	L	G	D	PACK INFO	
<b>ZINCATO / GALVANIZED</b>										
VC1101.A16	-	M16	31	6	19	55	41-66	21	20	5,7
VC1101.A18	432	M18	40	6	19	55	42-68	23	20	5,9
VC1101.A20	432.20	M20	40	6	19	60	46-72	25	20	6,9
VC1101.A22	435	M22	45	8	23	65	49-80	28	12	5,8
VC1101.A24	432.24	M24	51	8	23	70	50-81	29	10	5,8
VC1101.A27	436	M27	56	8	25	80	59-94	35	6	5,6
<b>INOX / STAINLESS STEEL</b>										
VC1101.A18.i	1432	M18	38	5	19	55	42-68	23	10	2,7
VC1101.A22.i	1435	M22	41	6	23	65	49-80	28	10	4,3
VC1101.A27.i	1436	M27	56	8	25	76	70-94	35	6	6,1



TECH. INFO

# VC1102

- IT Cardine a muro
- EN Wall hinge
- DE Wand Torband verstellbar
- FR Gond à sceller
- ES Bisagra para pared



CODE	ARTICLE	F	H	S	I	G	M	PACK INFO	
<b>ZINCATO / GALVANIZED</b>									
VC1102.A18	431	M18	40	6	19	38-61	68	14	4,7
VC1102.A20	431.20	M20	40	6	19	41-65	94	10	4,4
VC1102.A22	434	M22	45	8	23	43-72	77	10	5,4
VC1102.A24	431.24	M24	51	8	23	48-72	105	8	5,7
VC1102.A27	437	M27	56	8	25	51-84	90	6	6,4
<b>INOX / STAINLESS STEEL</b>									
VC1102.A18.i	1431	M18	38	5	19	38-61	68	10	3,2
VC1102.A22.i	1434	M22	41	6	23	43-72	77	10	5,1



TECH. INFO

CANCELLI AD ANTA · SWING GATES