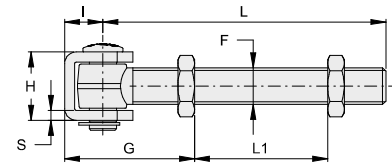


VC1203

- IT Cardine a barra lunga con cavallotto
- EN Long bar hinge with bracket
- DE Lang Torband mit U-Bügel
- FR Gond à tige longue avec étrier
- ES Bisagra de barra larga con pletina



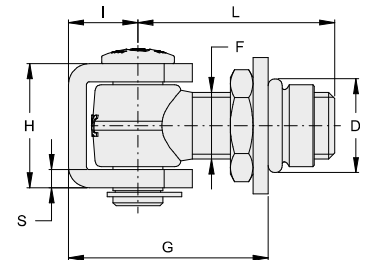
| CODE | ARTICLE | F | H | S | G | I | L | L1 | PACK INFO | |
|-------------------------------|---------|-----|----|---|---------|----|-----|----------|-----------|-----|
| | | | | | | | | | | |
| ZINCATO / GALVANIZED | | | | | | | | | | |
| VC1203.D18 | 430C | M18 | 39 | 6 | min. 46 | 21 | 156 | max. 120 | 10 | 5,1 |
| VC1203.D20 | 430C.20 | M20 | 39 | 6 | min. 50 | 21 | 160 | max. 130 | 10 | 6,0 |
| VC1203.D22 | 433C | M22 | 41 | 6 | min. 53 | 23 | 170 | max. 130 | 6 | 4,6 |
| VC1203.D24 | 430C.24 | M24 | 47 | 6 | min. 56 | 25 | 180 | max. 140 | 6 | 6,1 |
| INOX / STAINLESS STEEL | | | | | | | | | | |
| VC1203.D18.i | 1430C | M18 | 37 | 5 | min. 51 | 19 | 155 | max. 110 | 10 | 5,1 |
| VC1203.D22.i | 1433C | M22 | 39 | 5 | min. 60 | 22 | 170 | max. 115 | 6 | 4,6 |



TECH. INFO

VC1204

- IT Cardine regolabile con cavallotto a saldare
- EN Adjustable hinge with bracket to weld
- DE Einstellbar Torband mit U-Bügel zum Anschweißen
- FR Gond réglable avec étrier à souder
- ES Bisagra ajustable con pletina para soldar



| CODE | ARTICLE | F | H | S | I | G | D | L | PACK INFO | |
|-----------------------------|---------|-----|----|---|----|-------|----|----|-----------|-----|
| | | | | | | | | | | |
| ZINCATO / GALVANIZED | | | | | | | | | | |
| VC1204.A18 | 230.18C | M18 | 39 | 6 | 21 | 50-64 | 28 | 55 | 10 | 3,7 |
| VC1204.A20 | 230.20C | M20 | 39 | 6 | 21 | 54-68 | 30 | 60 | 10 | 4,3 |
| VC1204.A22 | 230.22C | M22 | 41 | 6 | 23 | 56-76 | 31 | 65 | 12 | 6,6 |
| VC1204.A24 | 230.24C | M24 | 47 | 6 | 25 | 63-81 | 35 | 70 | 6 | 4,5 |
| VC1204.A27 | 230.27C | M27 | 57 | 8 | 35 | 76-94 | 40 | 76 | 6 | 7,0 |



TECH. INFO